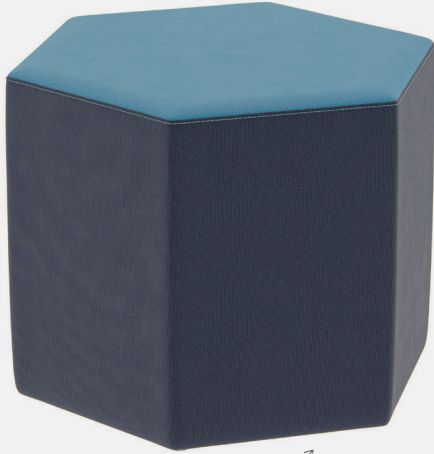


# OTTOMAN & BENCH SERIES HONEYCOMB OTTOMAN

Product No. F004

This unique little Honeycomb shape can serve as a single seating space or nest them together to make a Beehive set. These units are light weight enough for the kids to shuffle around and design their own comfortable spaces. Let the kids take control and watch them interact and collaborate to create different designs. This is the perfect seating solution that promotes collaborative and active learning.



Shown with 1" Nylon Glides

## DETAILS

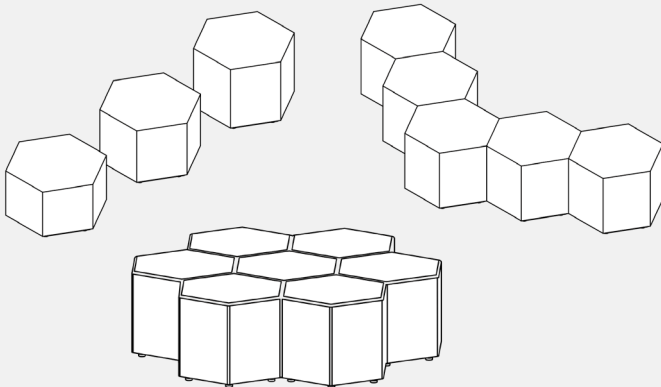
### CONSTRUCTION

- Solid foam construction
- Reinforced seams and stitching
- MDF baseboard to fit foot options
- Made in USA
- Backed with a lifetime warranty

### MODIFICATION

- Seat height
- Textile and placement
- Leg, caster, and foot options
- Fully zippered (no wood base)
- Colored stitching and zipper
- TFL work surface
- Embroidery

## QUICK COMBOS



**Fōmcore**  
SERVE. CREATE. INSPIRE.

## HOW TO SPECIFY F004

### STEP 1: SEAT HEIGHT

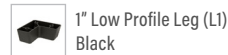
DIMENSION (L x W x H)	SEAT HEIGHT
	12"
	14"
	16"
	18"
	20"

### STEP 2: FOOT AND FULLY ZIPPERED

#### FULLY ZIPPERED



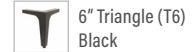
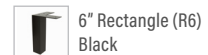
#### 1" STANDARD FOOT OPTIONS



#### 3" PREMIUM FOOT OPTIONS



#### 6" PREMIUM FOOT OPTIONS



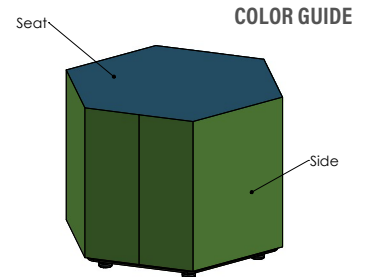
\*Reference the product breakdown on back for availability.

### STEP 3: GRADE AND TEXTILE

#### GRADES & SWATCHES



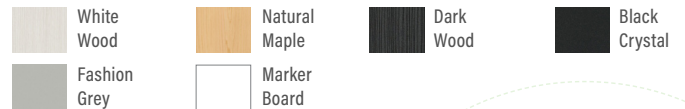
#### FABRIC DIRECTION & COLOR GUIDE



\*Thread will default to match the seat textile.

### STEP 4: ACCESSORIES (OPTIONAL)

#### TFL WORKSURFACE (TFL)



#### EMBROIDERY

- Personalize your furniture with embroidery!
- We can embroider logos up to 12" x 15".

#### EMBROIDERY SPECS »



#### PASSES

CAL TB-133

\*Reference the product breakdown on back for availability.

## STEP 5: CONFIGURE PART NUMBER

### FILL IN YOUR PART NUMBER

F	0	0	4	-	x	x	-			-				
FAMILY					STEP 1			FOOT/ZIP			STEP 4* (OPTIONAL)			
L		W		H								TFL		

### EXAMPLE PART NUMBER

F	0	0	4	-	2	4	x	2	1	x	1	4	-	R	3	-	T	F	L
FAMILY					L		W		H					FOOT/ZIP		TFL			

## STEP 6: CONFIGURE DESCRIPTION

### FILL IN YOUR DESCRIPTION

#### 1. SEAT

1. Seat				
LOCATION	GRADE	MANUFACTURER	PATTERN	COLOR

#### 2. SIDE

2. Side				
LOCATION	GRADE	MANUFACTURER	PATTERN	COLOR

#### FOOT

3" Rectangle Leg - Black
NAME/COLOR

#### TFL WORKSURFACE\*

White Wood
COLOR

#### EMBROIDERY\*

Seat	Rocket Logo
LOCATION	NAME

STEP 3

### EXAMPLE DESCRIPTION

#### 1. SEAT

1. Seat	1	Spradling	Silvertex	Sage
LOCATION	GRADE	MANUFACTURER	PATTERN	COLOR

#### 2. SIDE

2. Side	3	Momentum	Tribeca	Fossil
LOCATION	GRADE	MANUFACTURER	PATTERN	COLOR

#### FOOT

3" Rectangle Leg - Black
NAME/COLOR

#### TFL WORKSURFACE\*

White Wood
COLOR

#### EMBROIDERY\*

Seat	Rocket Logo
LOCATION	NAME

\*Optional add-ons. Reference product breakdown for availability.

INCLUDE ON PURCHASE ORDER

## EXAMPLE CONFIGURATION

F004-24x21x14-R3-TFL

1. Seat: Grade 1, Spradling, Silvertex, Sage | 2. Side: Grade 3, Momentum, Tribeca, Fossil

Foot: 3" Rectangle Leg Black | TFL Worksurface: White Wood | Embroidery: Seat, Rocket logo

## PRODUCT BREAKDOWN

### HONEYCOMB OTTOMAN (F004)

Product No.	Dimen./Weight (L x W x H)	FOOT OPTIONS												INTEGRATED POWER OPTION												TFL	Emb.
		Zip Z	Standard G1 L1		3" Premium R3 C3		S16	S29	6" Premium C6 T6		R6	M6	Standard G1 L1		3" Premium R3 C3		S16	S29	6" Premium C6 T6		R6	M6					
F004-24x21x12	24" x 21" x 12" 10 lbs.	✓	✓	✓	✓	✓	-	-	✓	✓	✓	✓	-	-	-	-	-	-	-	-	-	-	-	✓	✓		
F004-24x21x14	24" x 21" x 14" 11 lbs.	✓	✓	✓	✓	✓	-	-	✓	✓	✓	✓	-	-	-	-	-	-	-	-	-	-	-	✓	✓		
F004-24x21x16	24" x 21" x 16" 12 lbs.	✓	✓	✓	✓	✓	-	-	✓	✓	✓	✓	-	-	-	-	-	-	-	-	-	-	-	✓	✓		
F004-24x21x18	24" x 21" x 18" 13 lbs.	✓	✓	✓	✓	✓	-	-	✓	✓	✓	✓	-	-	-	-	-	-	-	-	-	-	-	✓	✓		
F004-24x21x20	24" x 21" x 20" 14 lbs.	✓	✓	✓	✓	✓	-	-	✓	✓	✓	✓	-	-	-	-	-	-	-	-	-	-	-	✓	✓		

**Fōmcore**  
SERVE. CREATE. INSPIRE.

1770 E. Keating Ave - Muskegon, MI 49442 • Tel: 231.366.4791 • [www.fomcore.com](http://www.fomcore.com)

ADDITIONAL  
RESOURCES »

