

High Performance by Design

Value products ideal for
high traffic/high abuse environments

Compatible with Disinfectants
High Abrasion

DESIGNTEX

+

Fōmcore

SERVE. CREATE. INSPIRE.





Rise Steel
3809-803



Alphabet Reed
3877-103



Big Dot Smoke
3525-803



Linnen Charcoal
3921-805



Rise Chamois
3809-201



Alphabet Limoncello
3877-202



Sorano Chevril
3403-504



Alphabet Pistachio
3877-501



Beguiled By The Wild Tamarin
3043-704



Beguiled By The Wild Gold Finch
3043-201



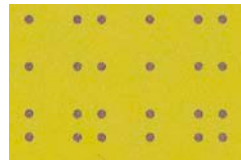
Beguiled By The Wild Tortoise
3043-502



Luster Blaze
3701-301



Alphabet Apricot
3877-701



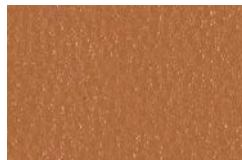
Little Dot Chartreuse
3524-501



Big Dot Cactus
3525-501



Rise Scarlet
3809-301



Silicone Element Cumin
3919-705



Luster Apple
3701-502



Rise Chartreuse
3809-501



Social Dance Primary
3962-902



Luster Affinity
3701-804



Trove Charcoal
3839-802



Alphabet Iron
3877-802



Sorano Licorice
3403-803



Little Dot Teal
3524-401



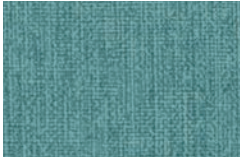
Rise Turquoise
3809-402



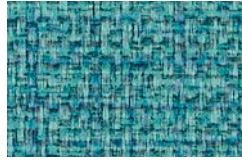
Silicone Element Isle
3919-403



Linnen Lake
3921-402



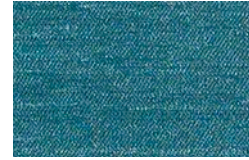
Alphabet Mediterranean
3877-401



Trove Bayou
3839-402



Silicone Element Azure
3919-404



Rise Pool
3809-403



Beguiled By The Wild Seal
3043-104



Beguiled By The Wild Peacock
3043-408



Beguiled By The Wild Parakeet
3043-405



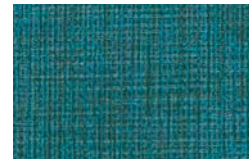
Alphabet Mica
3877-803



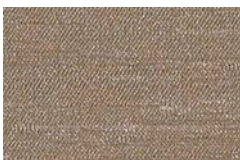
Big Dot Moon
3525-801



Trove Starlight
3839-403



Linnen Neptune
3921-403



Rise Nickel
3809-102



Linnen Seraph
3921-802



Luster Lagoon
3701-402



Sorano Sprite
3403-407



Social Dance Lucky
3962-901



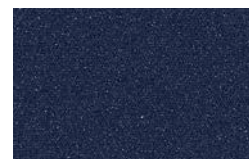
Sorano Paradise
3403-403



Big Dot Azure
3525-402



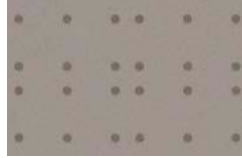
Silicone Element Lapis
3919-410



Luster Dive
3701-404



Silicone Element Skyscraper
3919-104



Little Dot Grey
3524-802



Linnen Stone
3921-804



Trove Shadow
3839-801



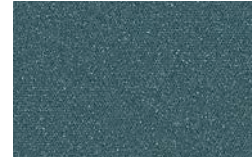
Rise Sky
3809-401



Trove Patina
3839-401



Big Dot Lake
3525-401



Luster Cove
3701-401



Beguled By The Wild Blue Heron
3043-407



Beguled By The Wild Blue Gecko
3043-409



Beguled By The Wild Fin Whale
3043-410



Alphabet Mason
3877-805



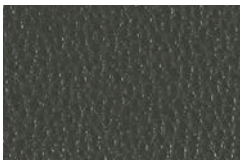
Linnen Salt Water
3921-404



Little Dot Denim
3524-402



Silicone Element Slate
3919-406



Silicone Element Rolling Stone
3919-807



Sorano Keystone
3403-802



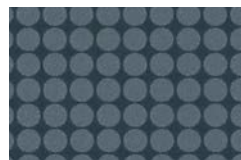
Rise True Blue
3809-404



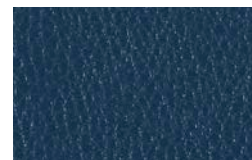
Linnen Oceania
3921-406



Social Dance Fountain
3962-801



Big Dot Blueberry
3525-404



Silicone Element Amazon
3919-411



Sorano Huron
3403-406



Alphabet Indigo
3877-409

High Performance by Design

Style Name	Style #	Content	Finish	Cleaning	Width	Repeat	Abrasion	Denim Dye Resistant	Ink Resistant
Alphabet	3877	100% Vinyl (without Harmful Phthalates)	Advanced Protective Topcoat	WS Bleach (10:1)	54 inches (137 cm)	None	1,000,000 Wyzenbeek double rubs (CD)	•	•
Beguiled By The Wild	3043	100% Polyurethane (Polycarbonate Based)	Silicone	WS Bleach (4:1)	54 inches (137 cm)	V 10.25" x H 10.25"	1,000,000 Wyzenbeek double rubs (CD)	•	•
Big Dot	3525	100% Polyurethane (Polycarbonate Based)	Advanced Protective Topcoat	WS Bleach (4:1)	54 inches (137 cm)	None	100,000 Wyzenbeek double rubs (WS)	•	
Linnen	3921	100% Polyurethane (Polycarbonate Based)	Advanced Protective Topcoat	WS Bleach (4:1)	54 inches (137 cm)	None	500,000 Wyzenbeek double rubs (CD)	•	•
Little Dot	3524	100% Polyurethane (Polycarbonate Based)	Advanced Protective Topcoat	WS Bleach (4:1)	54 inches (137 cm)	None	100,000 Wyzenbeek double rubs (WS)	•	
Luster	3701	100% Polyurethane (Polycarbonate Based)	Advanced Protective Topcoat	WS Bleach (4:1)	54 inches (137 cm)	None	250,000 Wyzenbeek double rubs (CD)	•	
Rise	3809	100% Vinyl (without Harmful Phthalates)	Advanced Protective Topcoat	WS Bleach (10:1)	54 inches (137 cm)	None	250,000 Wyzenbeek double rubs (CD)	•	
Silicone Element	3919	100% Silicone	None	WS Bleach (4:1)	55 inches (140 cm)	None	200,000 Wyzenbeek double rubs (WS)	•	•
Social Dance	3962	100% Polyester	Crypton®	WM Bleach (10:1)	54 inches (137 cm)	V 180" x H 54"	100,000 Wyzenbeek double rubs (CD)		
Sorano	3403	100% Vinyl	Advanced Protective Topcoat	WS Bleach (4:1)	54 inches (137 cm)	None	1,300,000 Wyzenbeek double rubs (CD)		
Trove	3839	100% Vinyl (without Harmful Phthalates)	Advanced Protective Topcoat	WS Bleach (10:1)	54 inches (137 cm)	None	250,000 Wyzenbeek double rubs (CD)		

Meets or exceeds these ACT performance standards:



Additional colorways available
For samples please call 800.221.1540

Advanced Protective Topcoat

Advanced Protective Topcoat is a PFOA-free, stain-resistant high-performance topcoat intended for all environments, including extreme-condition installations such as hospitality, healthcare, and education. This topcoat provides easier maintenance for the coated upholstery.

Cleaning Codes

Bleach Treatable with a 4:1 or 10:1 water-to-bleach dilution for the lifetime of the product.

WM Clean only with water-based Crypton® cleaners or detergent using the minimum amount of liquid. Do not use solvents.

WS Clean only with water-based or solvent-based cleaner. Do not saturate.

For regular maintenance of coated fabrics, always rinse the cleaned and/or disinfected area(s) with fresh water. Wipe dry and repeat if necessary.

Bleach and Disinfectant Testing

All products have been tested with bleach (sodium hypochlorite) and/or a variety of disinfectants (alcohol, hydrogen peroxide, quaternary ammonium). Scan the QR code below for specific test results.

Abrasion

Abrasion has been tested with the Wyzenbeek method using either cotton duck (CD) or wire screen (WS) as the abradant, or the Martindale method using worsted wool as the abradant. ACT guidelines require at least 30,000 Wyzenbeek double rubs or 40,000 Martindale cycles for woven upholsteries, or 50,000 Wyzenbeek double rubs for coated upholsteries in heavy duty single-shift application. Multiple factors affect fabric durability and appearance retention, including end-user application and proper maintenance. Abrasion test results exceeding ACT Performance Guidelines are not an indicator of product lifespan.



1770 E. Keating Ave
Muskegon, MI 49442
T: 231.366.4791
E: sales@fomcore.com
www.fomcore.com

Scan code with smartphone camera for additional resources and product information

