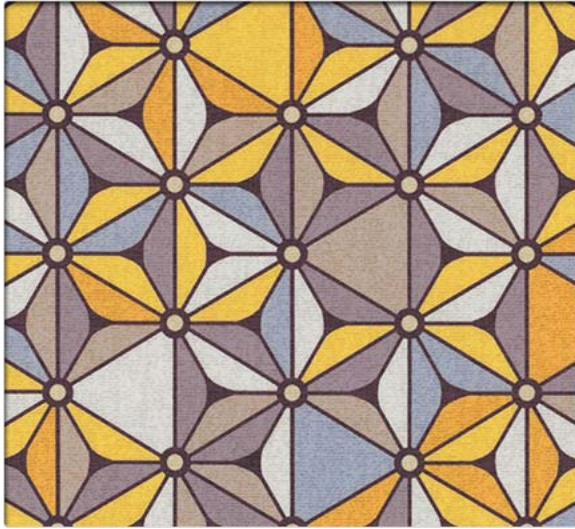


# Silicone - Uptown

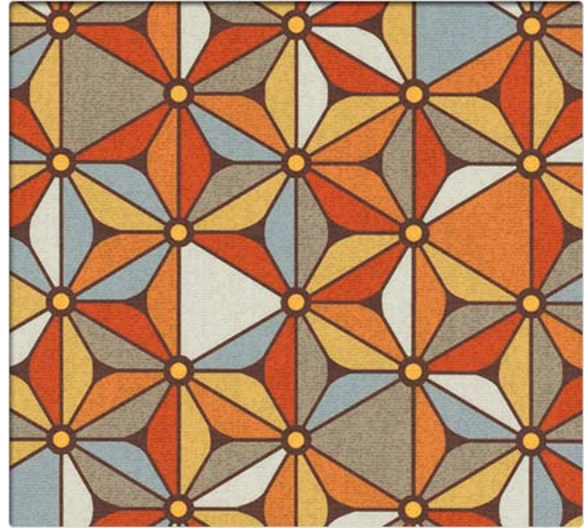
NON PVC SEATING

Grade 10

Click on image to order memo sample.



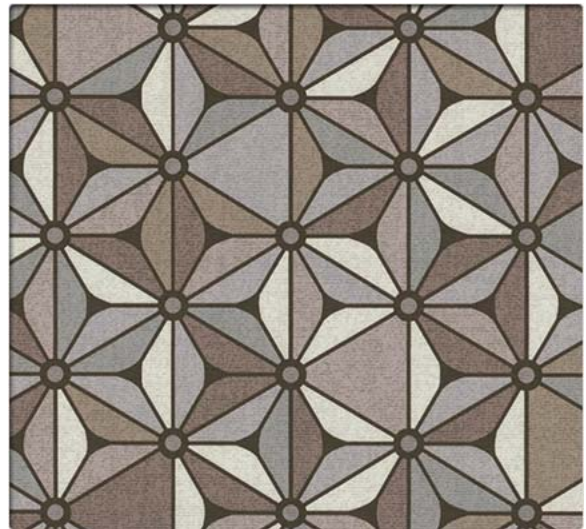
SUP350 Groove



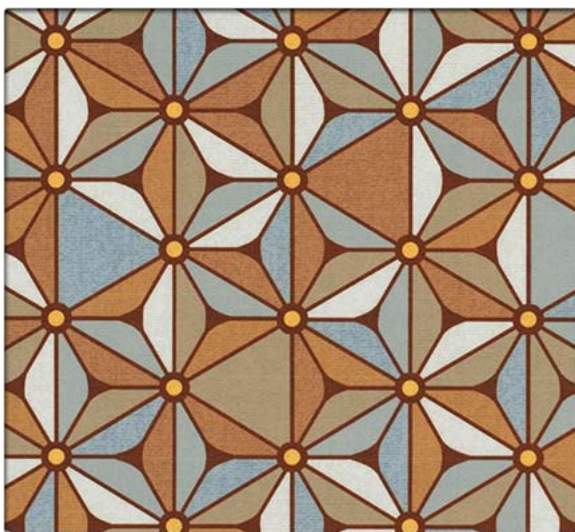
SUP351 Energy



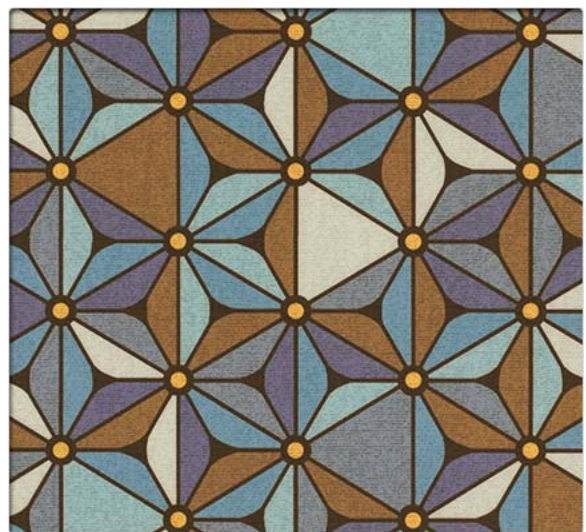
SUP352 Tidal



SUP357 Broadway



SUP354 Cove

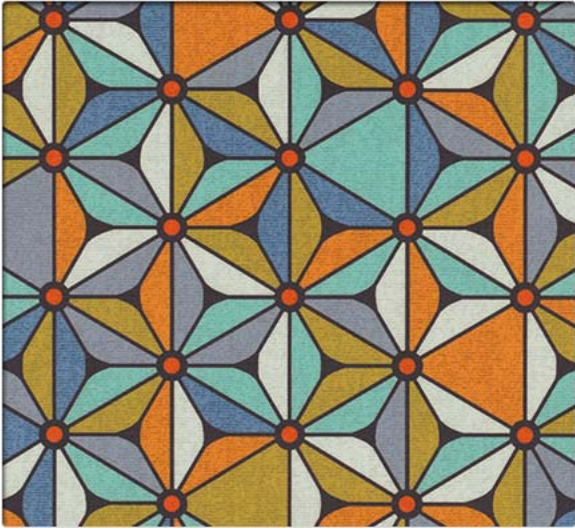


SUP356 Chill

# Silicone - Uptown

Click on image to order memo sample.

NON PVC SEATING  
Grade 10



SUP353 Gallery



# Silicone - Uptown

NON PVC SEATING

Grade 10

## Performance Summary

- Enhanced abrasion resistance
- Inherently stain and ink resistant
- Fluid barrier
- Bleach-solution cleanable
- Enhanced fade resistance

## Environmental

- GREENGUARD Gold Certified
- LBC Red List Free
- REACH Compliant
- RoHS Compliant
- Healthier Hospitals Compliant
- No fluorocarbons or perfluorinated compounds
- No added flame retardants
- No added antimicrobials
- Does not contain PVC
- Does not contain formaldehyde
- Does not contain plasticizers
- Formulated without Phthalates

## Cleaning and Maintenance

Cleaning Code: **(W-S)** For water-based stains use water-based cleaners. For oil-based stains use solvent-based cleaners. We recommend using a professional cleaning service.

Bleach solutions of up to 20% may be used for more difficult stains.

Dye lots may vary slightly.

\* This term and any corresponding data refer to the typical performance in the tests indicated and should not be construed to imply the behavior of this or any other material under actual fire conditions.

\*\* Multiple factors affect fabric durability and appearance retention, including end-user application and proper maintenance. Wyzenbeek results above 100,000 double rubs have not been shown to be an indicator of increased lifespan.

## Specifications



Content	100% Silicone Face with Polyester Backing
Backing	100 % Polyester
Weight	25.0 oz./lin. yd. ± 1.0 oz.
Width	54 inches
Repeat	Horizontal: 17.875 inches, Vertical: 17.875 inches, directional
Roll Size	30 yards

## Performance Characteristics

Abrasion Resistance** CFFA-1	Exceeds 200,000 double rubs - heavy duty
Break Strength CFFA-17	Warp: 190.96 lbs. min., Fill: 295.42 lbs. min.
Tear Strength CFFA-16	Warp: 9.68 lbs. min., Fill: 12.42 lbs. min.
Seam Slippage CFFA-14	Warp: 182.5 lbs. min., Fill: 146.5 lbs. min.
Colorfastness to Light CFFA-2	200 Hours, Class 4.5
Crocking CFFA-7	Dry: Class 5.0, Wet: Class 5.0
Fluid Barrier	Inherent Fluid Barrier

## Flammability\*

California Technical Bulletin 117-2013 Section 1	Passed
UFAC	Class 1
NFPA 260	Class 1
IMO 2010 FTP Code, Part 8	Passed
BS 5852 (Crib 5)	Passed



This product is Non PVC.



# Stinson®

C.F. Stinson, LLC  
2849 Product Drive  
Rochester Hills, MI 48309

P 800 841 6279  
F 248 299 3884

cfstinson.com