

Silicone - Downtown

NON PVC SEATING

Grade 10

Click on image to order memo sample.



SD0310 Fiesta



SD0311 Oceanside



SD0312 Boardwalk



SD0318 Gotham



SD0315 Skyscraper



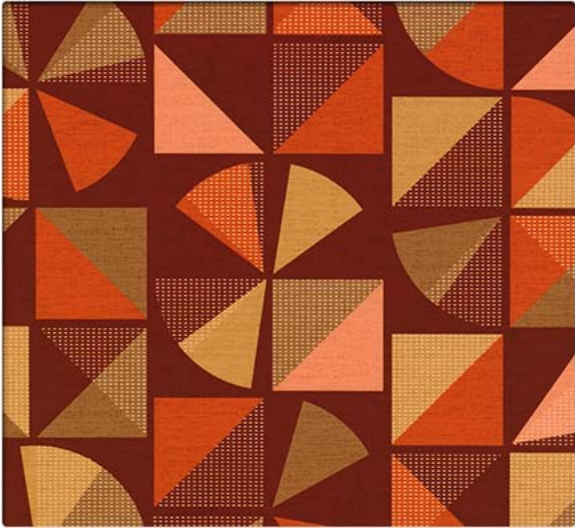
SD0316 Rail

Silicone - Downtown

NON PVC SEATING

Grade 10

Click on image to order memo sample.



SD0317 Cocktail



SD0314 Pier

Silicone - Downtown

NON PVC SEATING

Grade 10

Performance Summary

- Enhanced abrasion resistance
- Inherently stain and ink resistant
- Fluid barrier
- Bleach-solution cleanable
- Enhanced fade resistance

Environmental

- GREENGUARD Gold Certified
- LBC Red List Free
- REACH Compliant
- RoHS Compliant
- Healthier Hospitals Compliant
- No fluorocarbons or perfluorinated compounds
- No added flame retardants
- No added antimicrobials
- Does not contain PVC
- Does not contain formaldehyde
- Does not contain plasticizers
- Formulated without Phthalates

Cleaning and Maintenance

Cleaning Code: **(W-S)** For water-based stains use water-based cleaners. For oil-based stains use solvent-based cleaners. We recommend using a professional cleaning service.

Bleach solutions of up to 20% may be used for more difficult stains.

Dye lots may vary slightly.

* This term and any corresponding data refer to the typical performance in the tests indicated and should not be construed to imply the behavior of this or any other material under actual fire conditions.

** Multiple factors affect fabric durability and appearance retention, including end-user application and proper maintenance. Wyzenbeek results above 100,000 double rubs have not been shown to be an indicator of increased lifespan.

Specifications



Content	100% Silicone Face with Polyester Backing
Backing	Polyester Fabric
Weight	25.0 oz./lin. yd. ± 1.0 oz.
Width	54 inches
Repeat	Horizontal: 18 inches, Vertical: 18 inches, directional
Roll Size	30 yards

Performance Characteristics

Abrasion Resistance** CFFA-1	Exceeds 200,000 double rubs - heavy duty
Break Strength CFFA-17	Warp: 190.96 lbs. min., Fill: 295.42 lbs. min.
Tear Strength CFFA-16	Warp: 9.68 lbs. min., Fill: 12.42 lbs. min.
Seam Slippage CFFA-14	Warp: 182.5 lbs. min., Fill: 146.5 lbs. min.
Colorfastness to Light CFFA-2	200 Hours, Class 4.5
Crocking CFFA-7	Dry: Class 5.0, Wet: Class 5.0
Fluid Barrier	Inherent Fluid Barrier

Flammability*

California Technical Bulletin 117-2013 Section 1	Passed
UFAC	Class 1
NFPA 260	Class 1
IMO 2010 FTP Code, Part 8	Passed
BS 5852 (Crib 5)	Passed



This product is Non PVC.



Stinson®

C.F. Stinson, LLC
2849 Product Drive
Rochester Hills, MI 48309

P 800 841 6279
F 248 299 3884

cfstinson.com