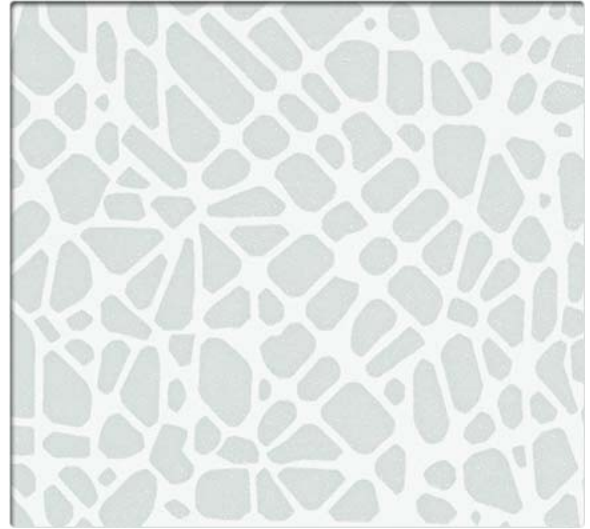


Click on image to order memo sample.



ROU50 Stucco



ROU51 Ice



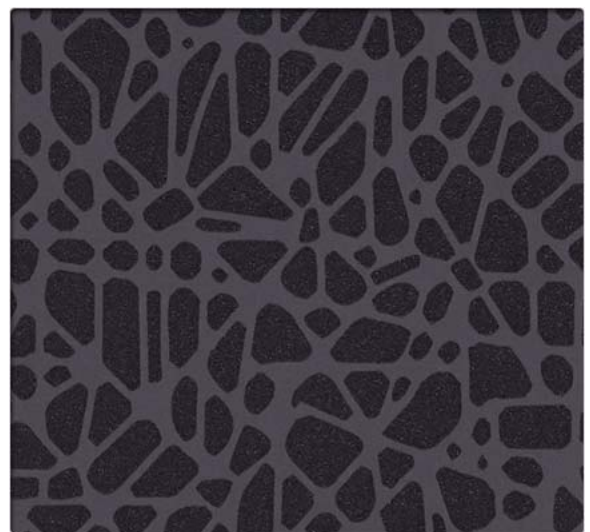
ROU52 Stone



ROU53 Seaside



ROU54 Antique

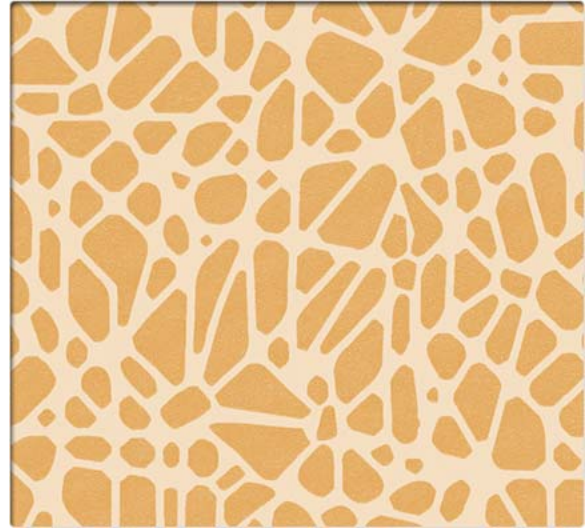


ROU61 Blackberry

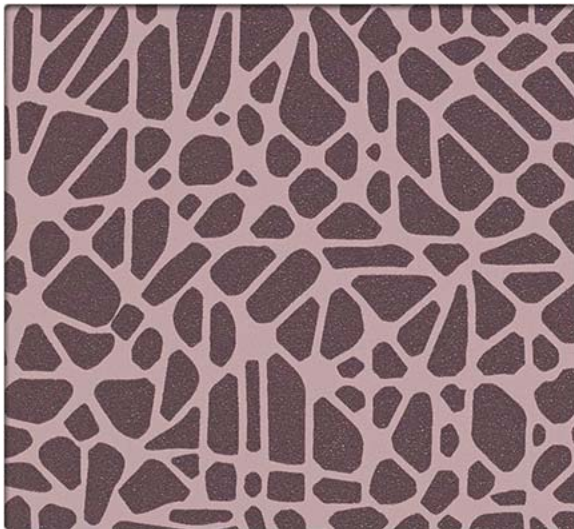
Click on image to order memo sample.



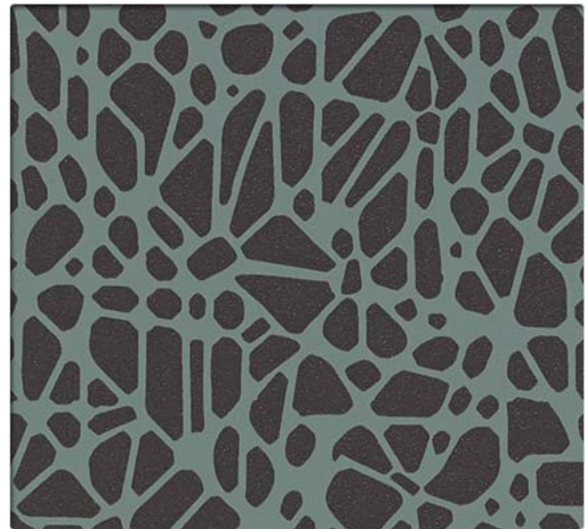
ROU56 Meadow



ROU57 Chamois



ROU58 Tea Rose



ROU59 Deep Sea



ROU60 Earth



ROU55 Jasper

Performance Summary

- Enhanced soil + stain resistance
- Enhanced abrasion resistance
- CFFA-Healthcare-201: Certified
- Fluid barrier
- Bleach-solution cleanable
- Enhanced fade resistance

Environmental

- GREENGUARD Certified
- REACH Compliant
- RoHS Compliant
- No fluorocarbons or perfluorinated compounds
- No added flame retardants
- No added antimicrobials
- Formulated without Phthalates

Cleaning and Maintenance

Cleaning Code: **(W)** Clean with water-based foam or water-based cleaners only. Do not use solvents. We recommend using a professional cleaning service.

Bleach solutions of up to 10% may be used for more difficult stains.

Dye lots may vary slightly.

* This term and any corresponding data refer to the typical performance in the tests indicated and should not be construed to imply the behavior of this or any other material under actual fire conditions.

** Multiple factors affect fabric durability and appearance retention, including end-user application and proper maintenance. Wyzenbeek results above 100,000 double rubs have not been shown to be an indicator of increased lifespan.

Specifications



Content	Vinyl Surface with Polyester Backing
Finish	Advanced Soil and Stain Resistant Top Coat
Backing	Polyester Fabric
Weight	28.0 oz./lin. yd. ± 1.0 oz.
Width	54 inches
Repeat	Horizontal: 25.0 inches, Vertical: 8.75 inches, directional, non-match
Roll Size	40 yards

Performance Characteristics

Abrasion Resistance** CFFA-1	Exceeds 1,300,000 double rubs - heavy duty
Adhesion CFFA-3	Warp: 4.0 lbs. min., Fill: 4.0 lbs. min.
Break Strength CFFA-17	Warp: 85 lbs. min., Fill: 75 lbs. min.
Tear Strength CFFA-16	Warp: 20 lbs. min., Fill: 27 lbs. min.
Seam Slippage CFFA-14	Warp: 35 lbs. min., Fill: 30 lbs. min.
Colorfastness to Light CFFA-2	650 Hours, Class 4.0
Fluid Barrier	Inherent Fluid Barrier

Flammability*

California Technical Bulletin 117-2013 Section 1	Passed
UFAC	Class 1
NFPA 260	Class 1
BIFMA	Class 1



Stinson®

C.F. Stinson, LLC
2849 Product Drive
Rochester Hills, MI 48309

P 800 841 6279

F 248 299 3884

cfstinson.com