

Round Trip

VINYL SEATING

Grade 8

Click on image to order memo sample.



RNT10 Khaki



RNT11 Moonbeam



RNT12 Timberland



RNT13 Breeze



RNT14 Soleil



RNT21 Lagoon

Round Trip

VINYL SEATING

Grade 8

Click on image to order memo sample.



RNT16 Energy



RNT17 Sunset



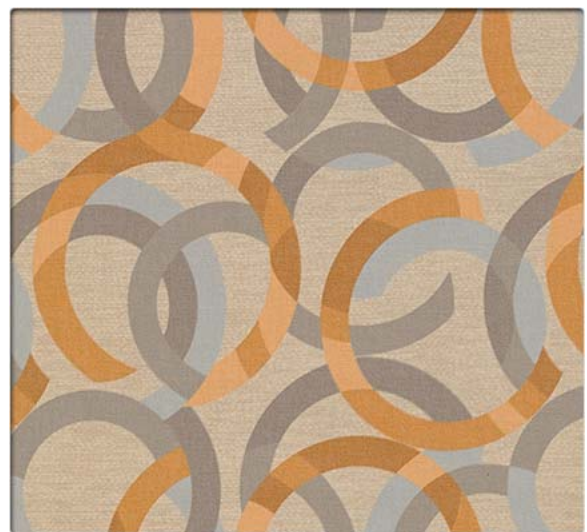
RNT18 Riverbed



RNT19 Resort



RNT20 Ocean Park



RNT15 Praline

Performance Summary

- Enhanced soil + stain resistance
- Enhanced abrasion resistance
- CFFA-Healthcare-201: Certified
- Fluid barrier
- Bleach-solution cleanable
- Enhanced fade resistance

Environmental

- GREENGUARD Certified
- REACH Compliant
- RoHS Compliant
- No fluorocarbons or perfluorinated compounds
- No added flame retardants
- No added antimicrobials
- Does not contain formaldehyde
- Formulated without Phthalates

Cleaning and Maintenance

Cleaning Code: **(W-S)** For water-based stains use water-based cleaners. For oil-based stains use solvent-based cleaners. We recommend using a professional cleaning service.

Bleach solutions of up to 10% may be used for more difficult stains.

Dye lots may vary slightly.

* This term and any corresponding data refer to the typical performance in the tests indicated and should not be construed to imply the behavior of this or any other material under actual fire conditions.

** Multiple factors affect fabric durability and appearance retention, including end-user application and proper maintenance. Wyzenbeek results above 100,000 double rubs have not been shown to be an indicator of increased lifespan.

Specifications



Content	Vinyl Surface with Polyester Backing
Finish	Advanced Soil and Stain Resistant Top Coat
Backing	Polyester Fabric
Weight	30.0 oz./lin. yd. ± 1.0 oz.
Width	54 inches
Repeat	Horizontal: 8.75 inches, Vertical: 18.5 inches, directional
Roll Size	30 yards

Performance Characteristics

Abrasion Resistance** CFFA-1	Exceeds 100,000 double rubs - heavy duty
Adhesion CFFA-3	Warp: 3.3 lbs. min., Fill: 3.3 lbs. min.
Break Strength CFFA-17	Warp: 121 lbs. min., Fill: 72 lbs. min.
Tear Strength CFFA-16	Warp: 5.6 lbs. min., Fill: 5.9 lbs. min.
Seam Slippage CFFA-14	Warp: 46 lbs. min., Fill: 35 lbs. min.
Colorfastness to Light CFFA-2	1000 Hours, Class 4.5
Crocking CFFA-7	Dry: Class 4.0, Wet: Class 4.0
Fluid Barrier	Inherent Fluid Barrier

Flammability*

California Technical Bulletin 117-2013 Section 1	Passed
UFAC	Class 1
NFPA 260	Class 1



Stinson®

C.F. Stinson, LLC
2849 Product Drive
Rochester Hills, MI 48309

P 800 841 6279
F 248 299 3884

cfstinson.com