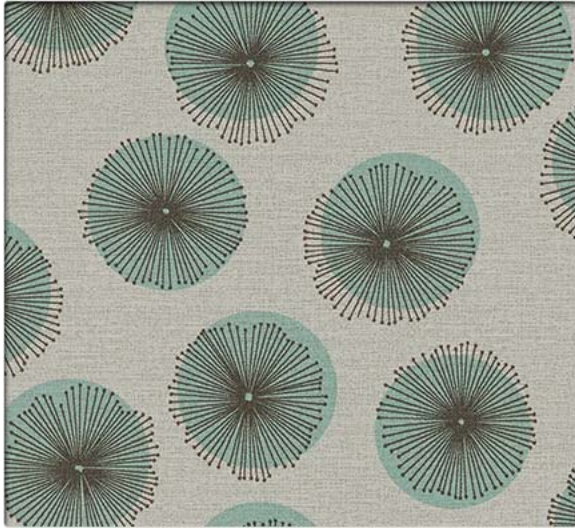


# Petal Dots

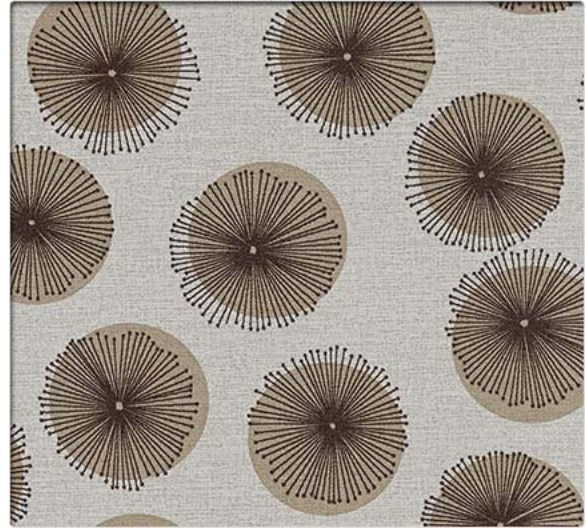
NON PVC SEATING

Grade 8

Click on image to order memo sample.



PD055 Seaglass



PD051 Pumice



PD052 Wild Fire



PD053 Sand Dune



PD058 Moonbeam



PD056 Dusk

# Petal Dots

NON PVC SEATING

Grade 8

Click on image to order memo sample.



PD057 Endive



PD050 Sunflower



PD054 Shoreline

## Performance Summary

- Enhanced soil + stain resistance
- Enhanced abrasion resistance
- CFFA-Healthcare-201: Certified
- Enhanced ink resistance
- Denim dye resistant
- Fluid barrier
- Bleach-solution cleanable
- Enhanced fade resistance

## Environmental

- GREENGUARD Certified
- LBC Red List Free (4.0)
- REACH Compliant
- RoHS Compliant
- Healthier Hospitals Compliant
- No fluorocarbons or perfluorinated compounds
- No added flame retardants
- No added antimicrobials
- Does not contain PVC
- Does not contain formaldehyde
- Does not contain plasticizers
- Formulated without Phthalates

## Cleaning and Maintenance

Cleaning Code: **(W-S)** For water-based stains use water-based cleaners. For oil-based stains use solvent-based cleaners. We recommend using a professional cleaning service.

Bleach solutions of up to 20% may be used for more difficult stains.

Dye lots may vary slightly.

\* This term and any corresponding data refer to the typical performance in the tests indicated and should not be construed to imply the behavior of this or any other material under actual fire conditions.

\*\* Multiple factors affect fabric durability and appearance retention, including end-user application and proper maintenance. Wyzenbeek results above 100,000 double rubs have not been shown to be an indicator of increased lifespan.

## Specifications

Content	Polyurethane (Polycarbonate Resins) with Silicone Surface
Finish	Advanced Soil and Stain Resistant Top Coat + ink resistance
Backing	Polyester
Weight	22.8 oz./lin. yd. ± 1.0 oz.
Width	54 inches
Repeat	Horizontal: 13.5 inches, Vertical: 20.125 inches
Roll Size	30 yards

## Performance Characteristics

Abrasion Resistance** CFFA-1	Exceeds 100,000 double rubs - heavy duty
Break Strength CFFA-17	Warp: 110 lbs. min., Fill: 95 lbs. min.
Tear Strength CFFA-16	Warp: 13.4 lbs. min., Fill: 14.9 lbs. min.
Seam Slippage CFFA-14	Warp: 75.6 lbs. min., Fill: 69.2 lbs. min.
Colorfastness to Light CFFA-2	200 Hours, Class 5.0
Crocking CFFA-7	Dry: Class 5.0, Wet: Class 5.0
Fluid Barrier	Inherent Fluid Barrier
Hydrolytic Stability ISO 1419 (Tropical Test Method C)	Passes a minimum of 15 weeks; making it suitable for high traffic commercial environments.

## Flammability\*

California Technical Bulletin 117-2013 Section 1	Passed
UFAC	Class 1
NFPA 260	Class 1



This product is Non PVC.



# Stinson®

C.F. Stinson, LLC  
2849 Product Drive  
Rochester Hills, MI 48309

P 800 841 6279

F 248 299 3884

cfstinson.com