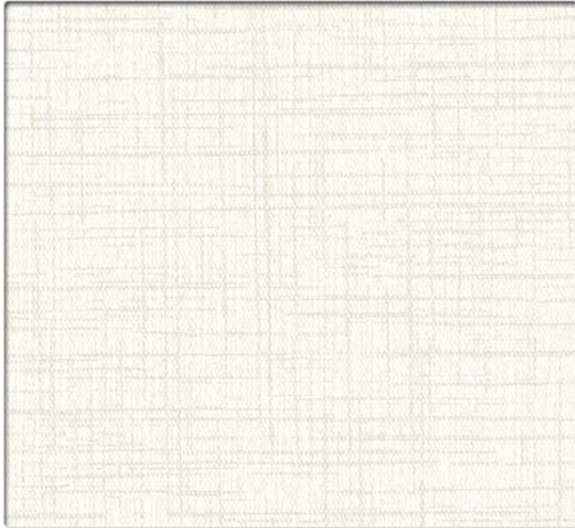
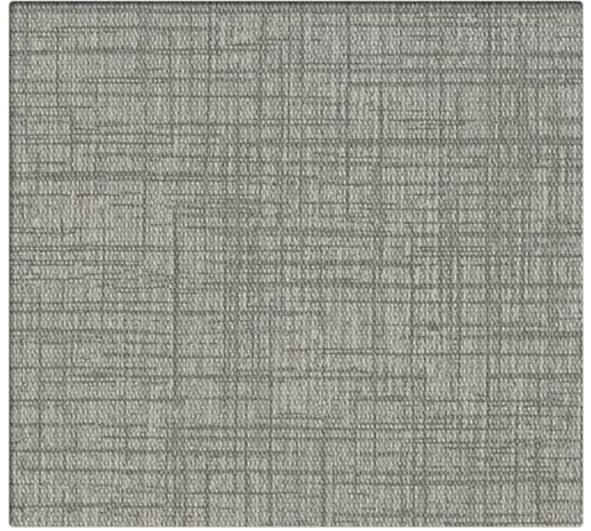


Criss Cross 2.0

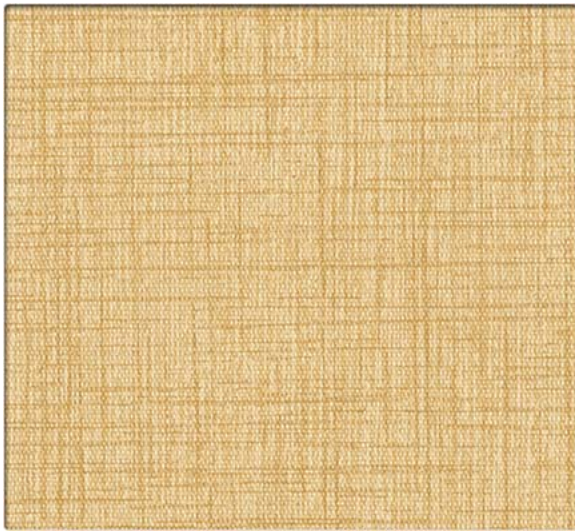
VINYL SEATING



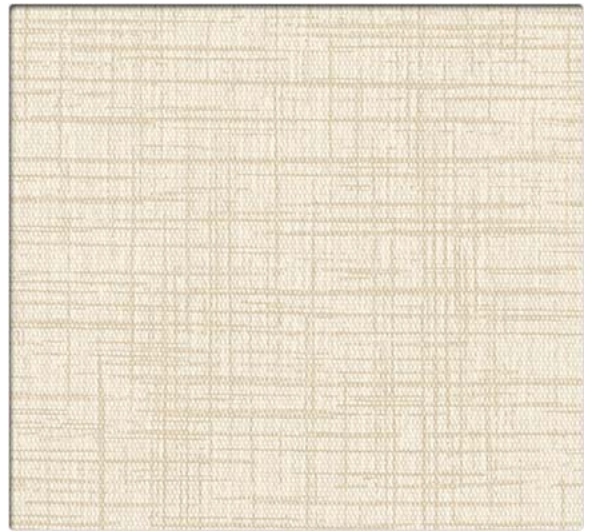
CRS240 Alabaster



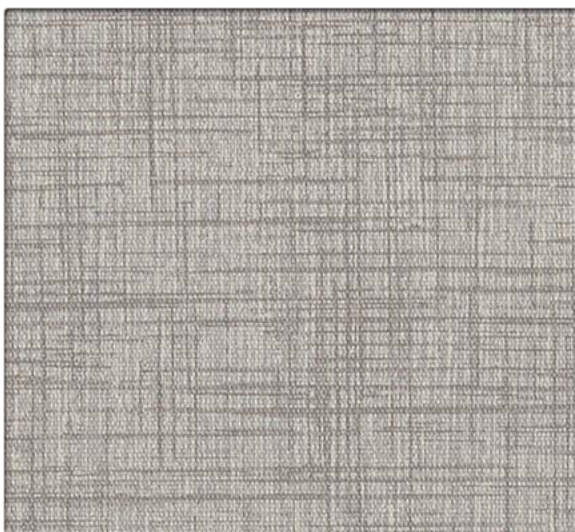
CRS277 Breeze



CRS242 Desert



CRS243 Stucco



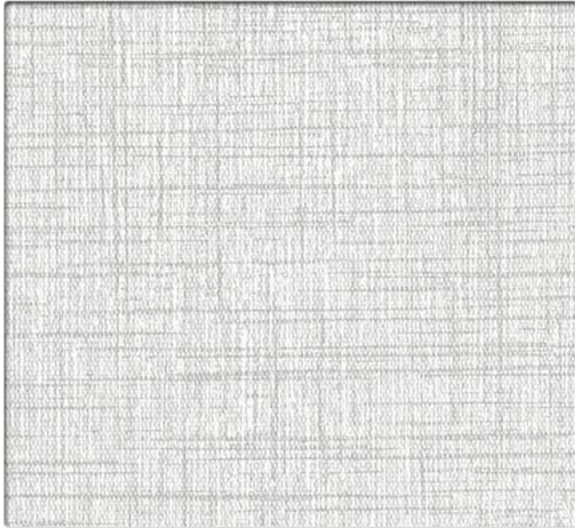
CRS244 Graystone



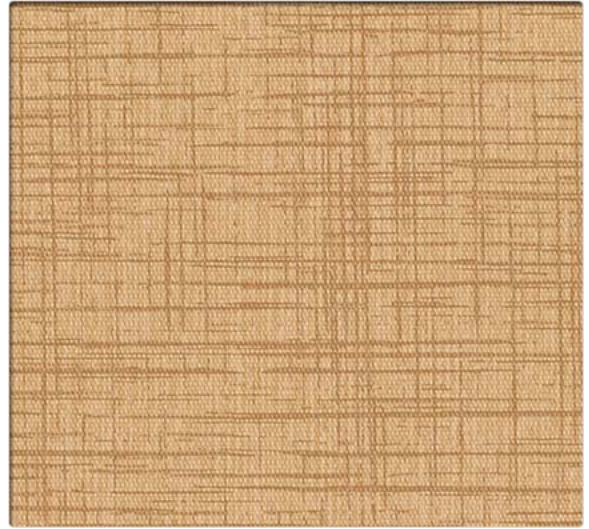
CRS245 Mineral

Criss Cross 2.0

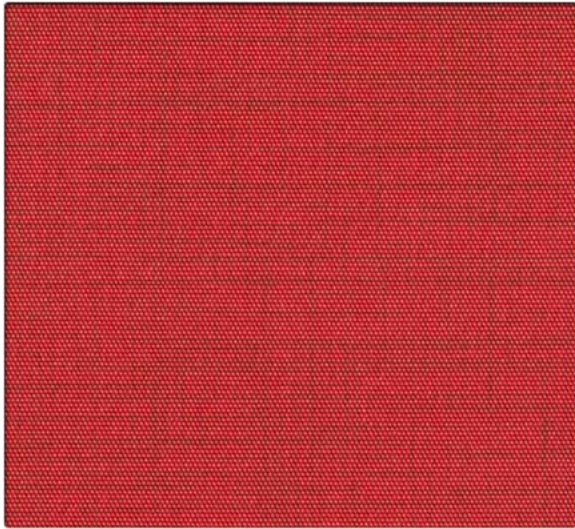
VINYL SEATING



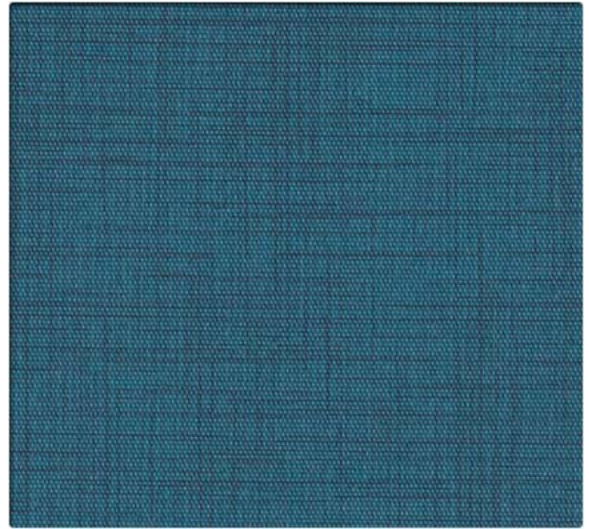
CRS246 Quicksilver



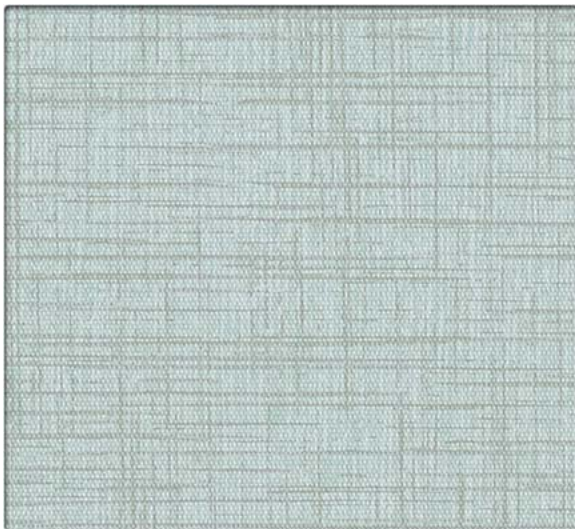
CRS247 Cork



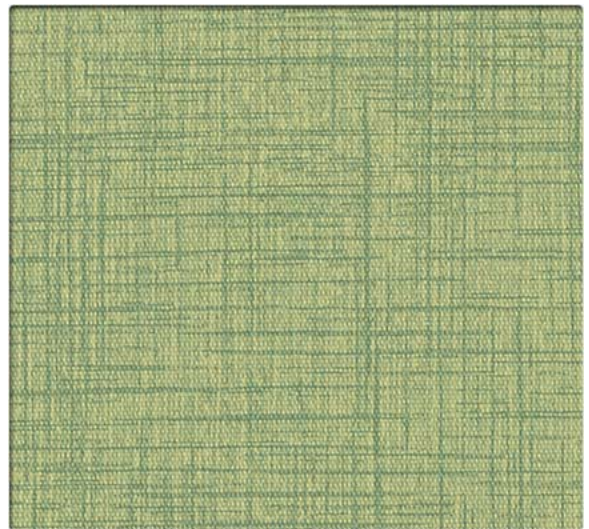
CRS248 Red



CRS249 Ocean



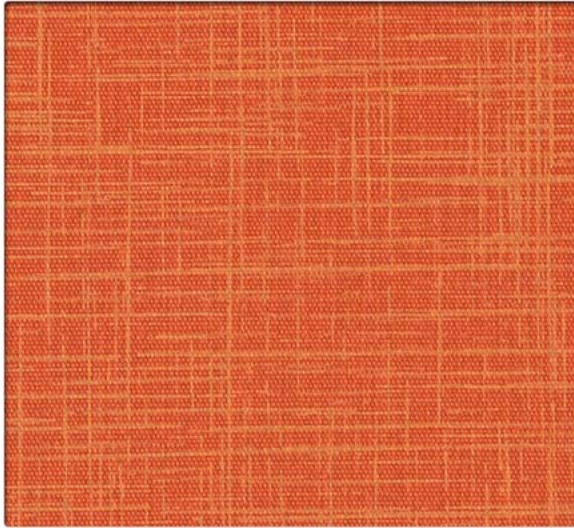
CRS250 Rain



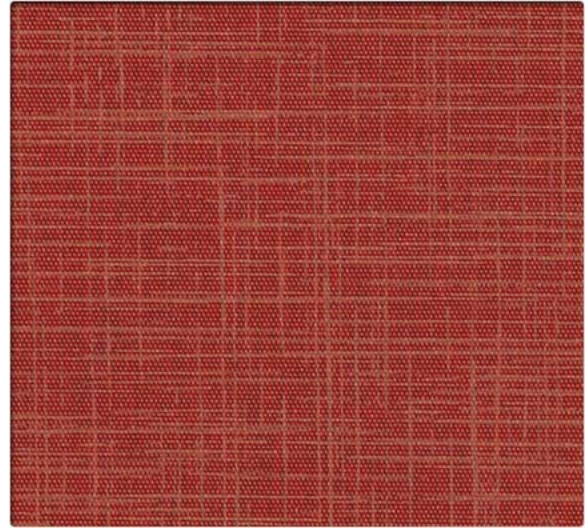
CRS251 Meadow

Criss Cross 2.0

VINYL SEATING



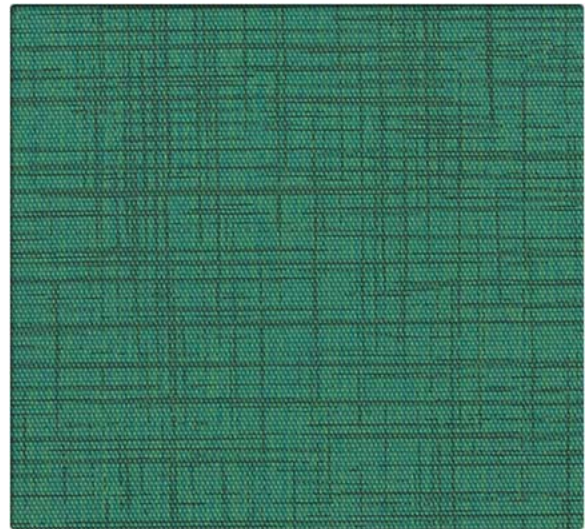
CRS252 Orange



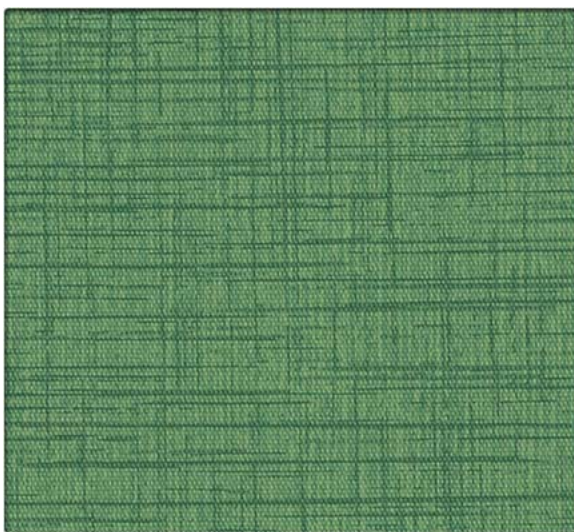
CRS253 Brick



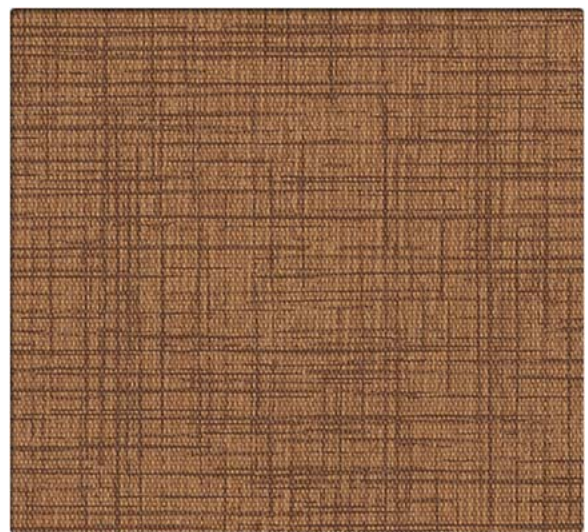
CRS254 Eggplant



CRS255 Topiary



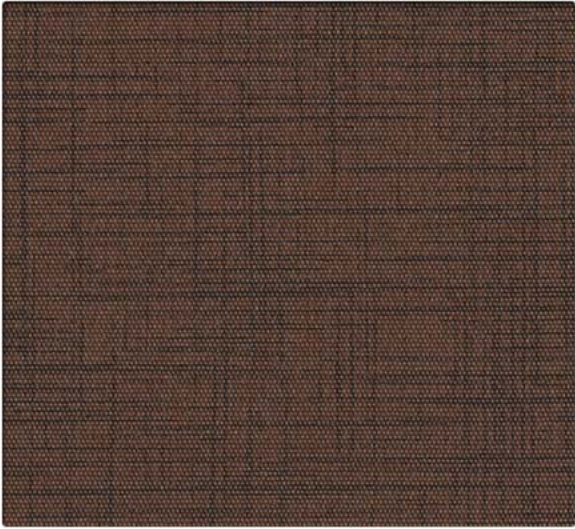
CRS256 Leaf



CRS257 Henna



CRS258 Java



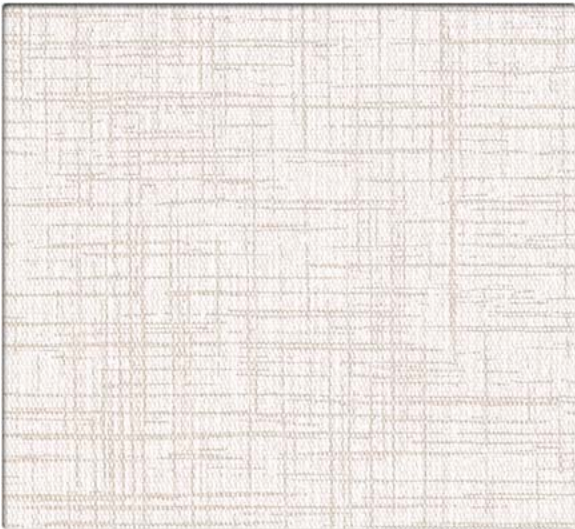
CRS259 Truffle



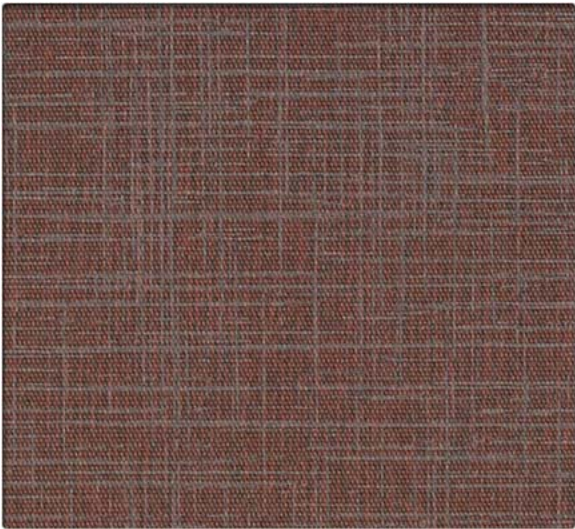
CRS260 Navy



CRS261 Abyss



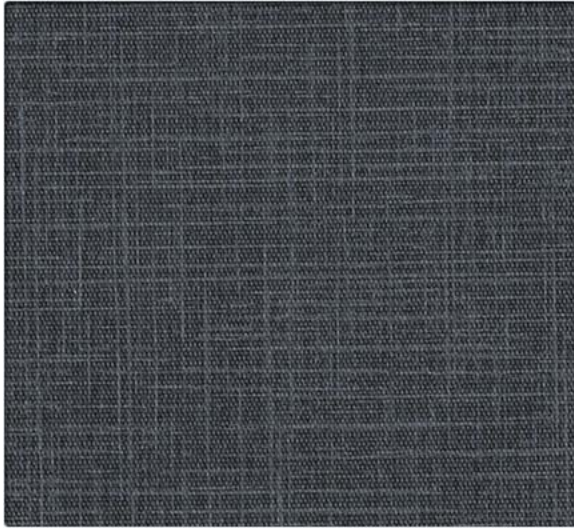
CRS262 Cirrus



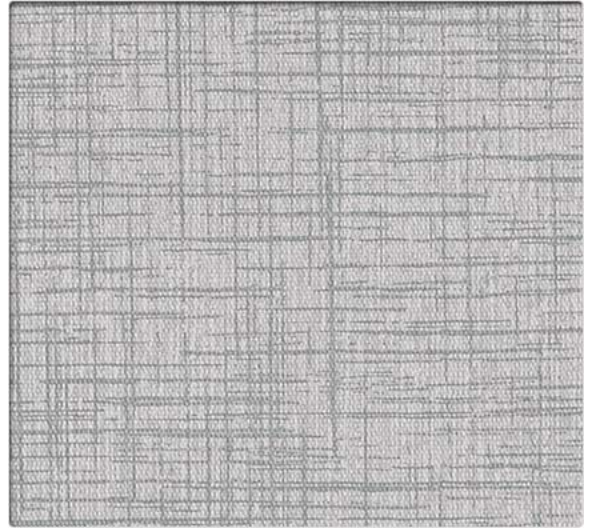
CRS263 Cabernet

Criss Cross 2.0

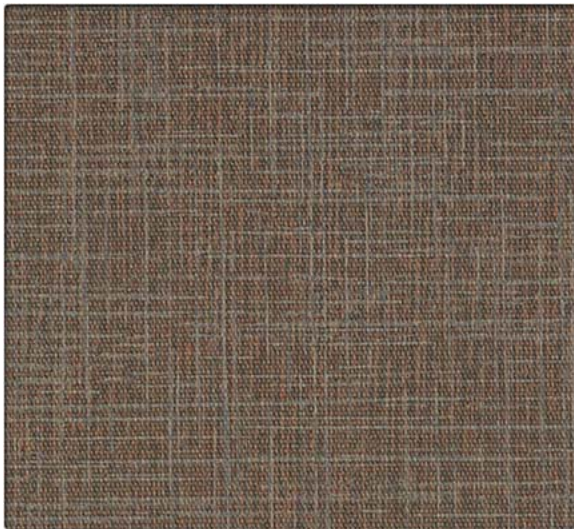
VINYL SEATING



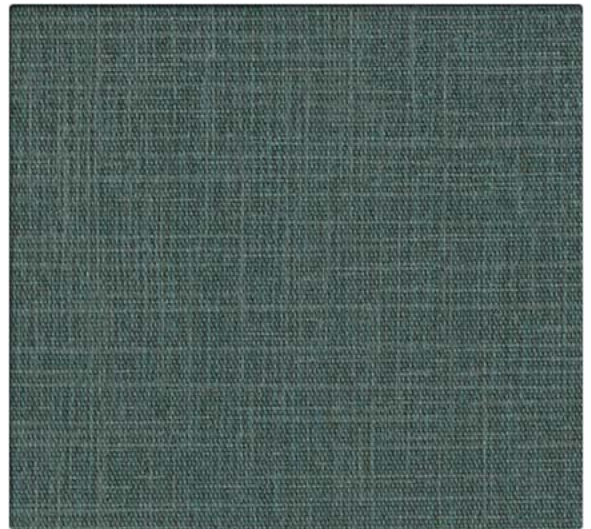
CRS264 Indigo



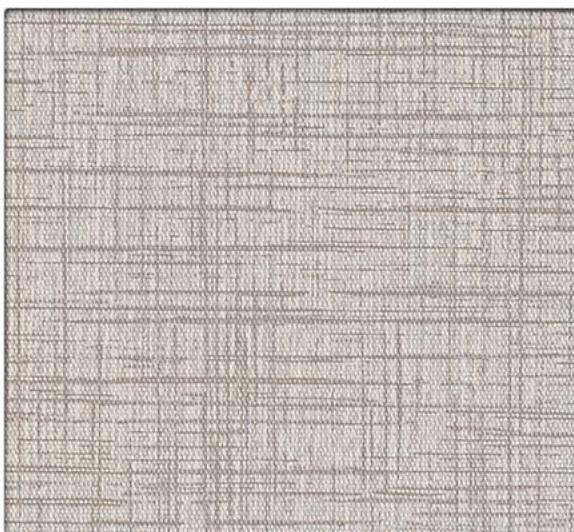
CRS265 Glass



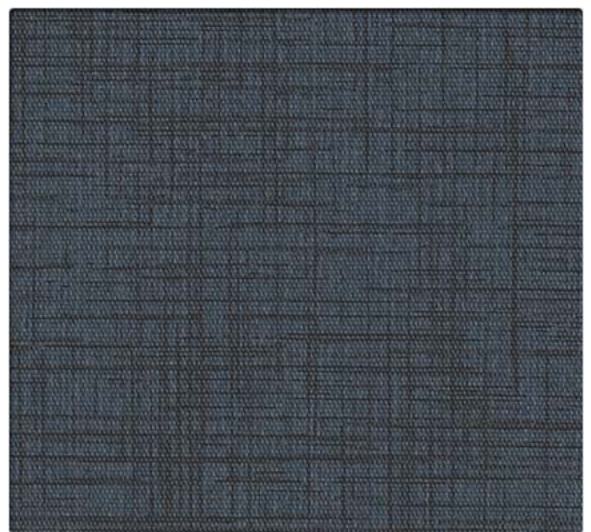
CRS266 Brownie



CRS267 Pine



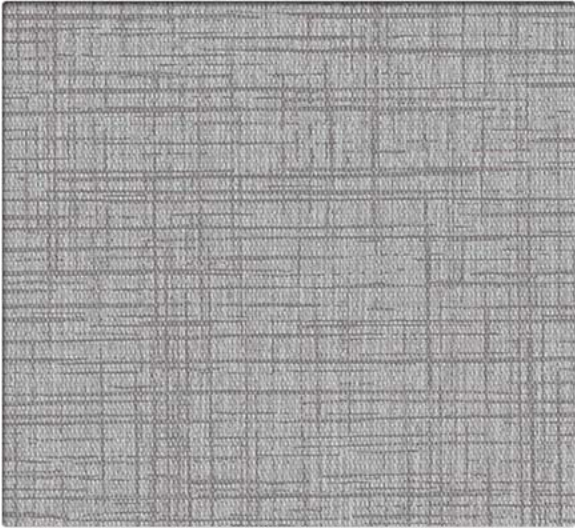
CRS268 Quantum



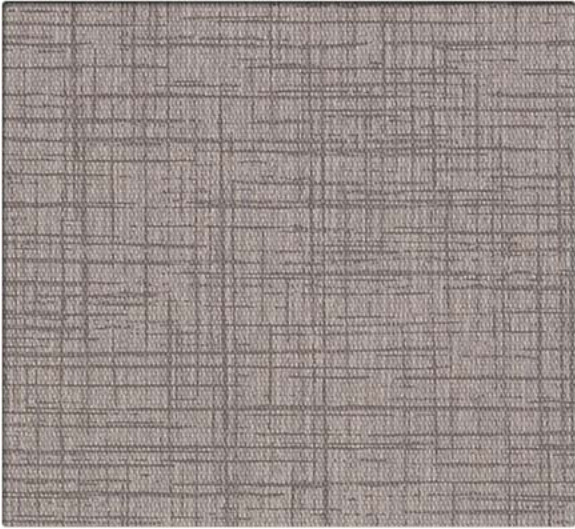
CRS269 True Blue

Criss Cross 2.0

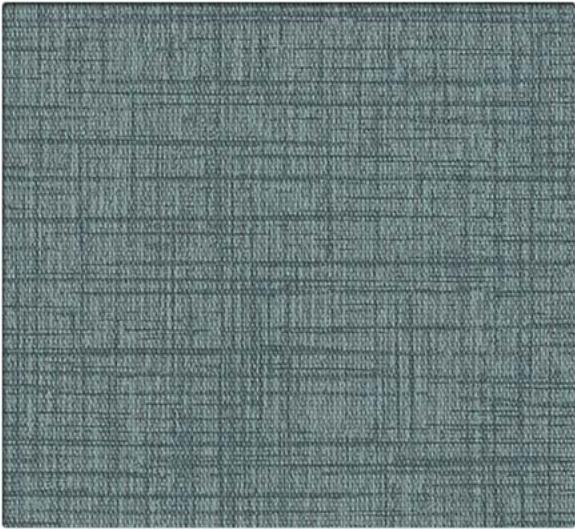
VINYL SEATING



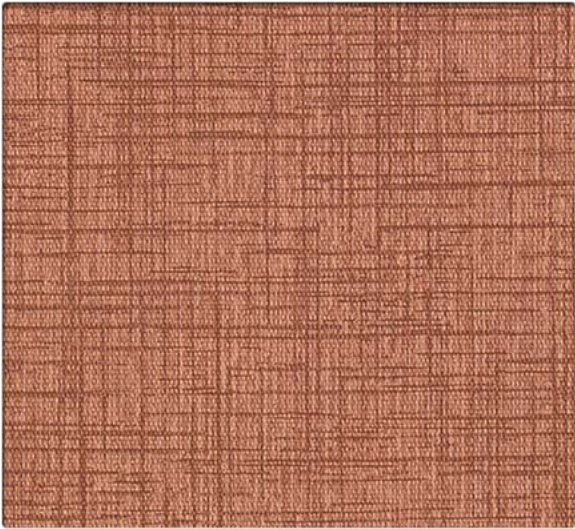
CRS270 Stream



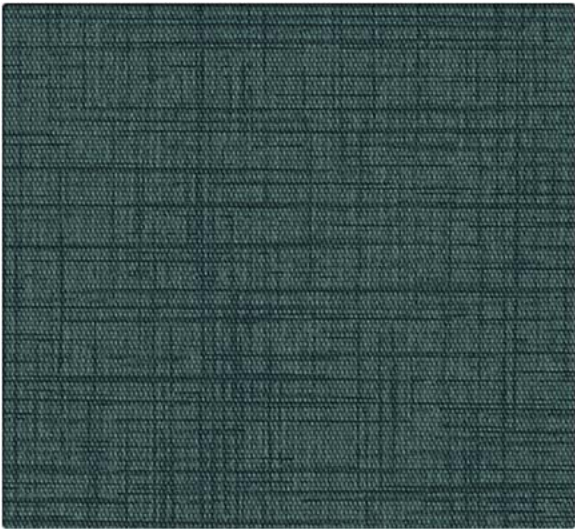
CRS271 Titanium



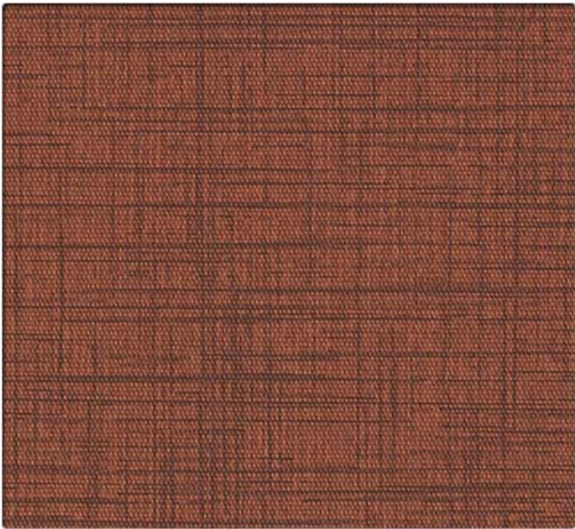
CRS272 Azure



CRS273 Blush



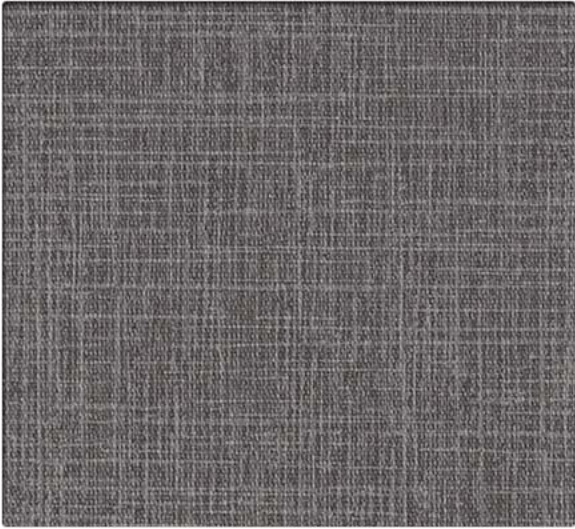
CRS274 Caribbean



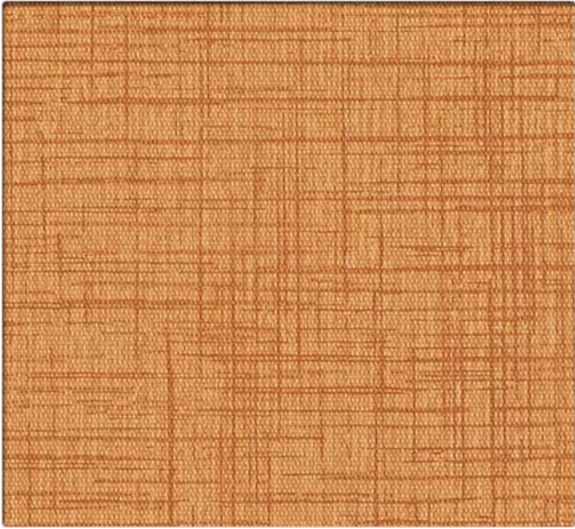
CRS275 Crimson

Criss Cross 2.0

VINYL SEATING



CRS276 Onyx



CRS241 Caramel

Criss Cross 2.0

VINYL SEATING

Performance Summary

- Enhanced soil + stain resistance
- Enhanced abrasion resistance
- CFFA-Healthcare-201: Certified
- Denim stain resistant
- Fluid barrier
- Bleach-solution cleanable
- Enhanced fade resistance

Environmental

- GREENGUARD Gold Certified
- REACH Compliant
- RoHS Compliant
- No PFAS, fluorocarbons or perfluorinated compounds
- No added flame retardants
- No added antimicrobials
- Does not contain formaldehyde
- Formulated without Phthalates

Cleaning and Maintenance

Cleaning Code: **(W-S)** For water-based stains use water-based cleaners. For oil-based stains use solvent-based cleaners. We recommend using a professional cleaning service.

Bleach solutions of up to 10% may be used for more difficult stains.

Dye lots may vary slightly.

* This term and any corresponding data refer to the typical performance in the tests indicated and should not be construed to imply the behavior of this or any other material under actual fire conditions.

** Multiple factors affect fabric durability and appearance retention, including end-user application and proper maintenance. Wyzenbeek results above 100,000 double rubs have not been shown to be an indicator of increased lifespan.

Specifications



Content	Non-Phthalate Vinyl Surface with Polyester Backing
Finish	Advanced Soil and Stain Resistant Top Coat
Backing	Polyester
Weight	32.0 oz./lin. yd.
Width	54 inches
Roll Size	30 yards

Performance Characteristics

Abrasion Resistance** ASTM D-4157	Exceeds 500,000 double rubs - heavy duty
Break Strength ASTM D-751-06	Warp: 131.0 lbs. min., Fill: 95.0 lbs. min.
Tear Strength ASTM D-751-06	Warp: 8.5 lbs. min., Fill: 6.5 lbs. min.
Seam Slippage ASTM D-751-06	Warp: 60 lbs. min., Fill: 40 lbs. min.
Colorfastness to Light AATCC-16	650 Hours, Class 4.0
Crocking AATCC-8	Dry: Class 5.0, Wet: Class 5.0
Fluid Barrier	Inherent Fluid Barrier

Flammability*

California Technical Bulletin 117-2013 Section 1	Passed
NFPA 260	Class 1
UFAC	Class 1



This product is formulated without phthalates.



Stinson®

C.F. Stinson, LLC
2849 Product Drive
Rochester Hills, MI 48309

P 800 841 6279

F 248 299 3884

cfstinson.com