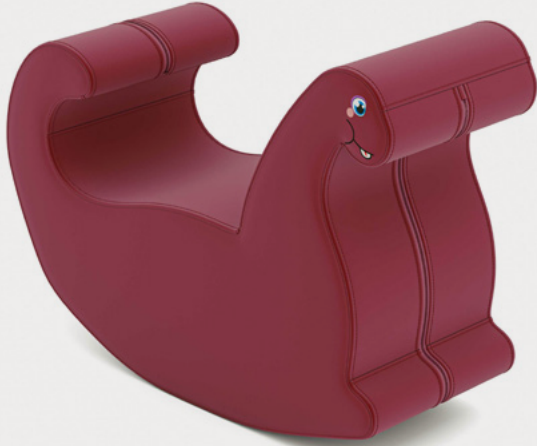


LOTUS SERIES | ROCK'N IN THE WILD
BO BRACHO

Product No. F173

Fōmcore's Rock'n in the Wild line consists of fully-foam animals that have no pinch points and a curved base that allows students to lightly rock back and forth.



DETAILS

CONSTRUCTION

- Solid foam construction
- Reinforced seams and stitching
- Fully zippered (no wood base)
- Made in USA
- Backed with a lifetime warranty



HOW TO SPECIFY F173

STEP 1: DIMENSIONS

DIMENSION (L x W x H)	SEAT HEIGHT
<p>31" x 12" x 23"</p>	12"

STEP 2: FULLY ZIPPERED

FULLY ZIPPERED



STEP 3: TEXTILE

BO BRACHO AVAILABLE IN SPRADLING SILVERTEX RASPBERRY



ROCK'N IN THE WILD
COLOR GUIDE

[CLICK TO VIEW »](#)



*Thread and zipper will default to match textile.

STEP 4: ACCESSORIES

EMBROIDERY

- Bo Face embroidery included in standard product availability.

CAL TB-133

- Optional flame retardant add on.

STEP 5: PART NUMBER AND DESCRIPTION

PART NUMBER

F	1	7	3	-	3	1	x	1	2	x	2	3	-	Z			
FAMILY					L				W				H			ZIP	
STEP 1											STEP 2						

DESCRIPTION

1	Spradling	Silvertex	Raspberry	—	STEP 3
GRADE	MANUFACTURER	PATTERN	COLOR		

EMBROIDERY

Bo Face
NAME

FLAME RETARDANT*

*Optional add-on.

INCLUDE ON PURCHASE ORDER

AVAILABLE CONFIGURATION EXAMPLE

F173-31x12x23-Z
Grade 1, Spradling, Silvertex, Raspberry
Embroidery: Bo Face | CAL TB-133

BO BRACHO (F173)

PRODUCT BREAKDOWN

Product No.	Dimen./Weight (LxWxH)	Zip Z	FOOT OPTIONS										INTEGRATED POWER OPTIONS						TFL	Emb.				
			Standard		3" Premium		6" Premium						Standard		3" Premium		6" Premium							
			G1	L1	R3	C3	S16	S29	C6	T6	R6	M6	G1	L1	R3	C3	S16	S29	C6	T6	R6	M6		
F173-31x12x23	31" x 12" x 23" 5 lbs.	✓	-	-	-	-	-	-	-	-	-	-	-	-	-	-	-	-	-	-	-	-	-	Bo Face*

*Include Bo Face embroidery in description on purchase order.