

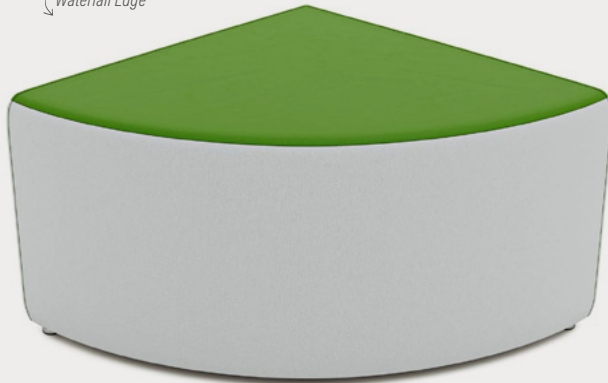
ARMLESS SERIES

# LINEAR WEDGE

Product No. F062

Elegant curves and waterfall edge make the Curved Bench both a conversation starter and comfortable seating option. The Curved Bench is an easy addition to any of the pieces in the Armless Series. Use alone or as part of your modern seating arrangement it won't disappoint.

Waterfall Edge



Shown with 1" Nylon Glides

## DETAILS

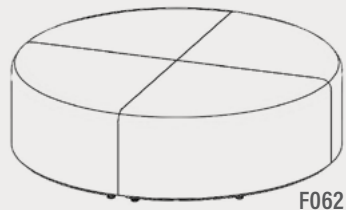
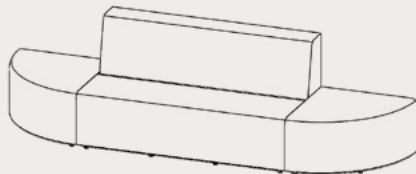
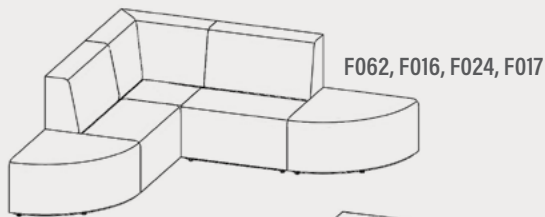
### CONSTRUCTION

- Solid foam construction
- MDF baseboard to fit foot options
- Reinforced seams and stitching
- Made in USA
- Backed with a lifetime warranty

### MODIFICATION

- Seat height
- Textile and placement
- Leg, caster, and foot options
- Colored stitching and zipper
- Embroidery

## QUICK COMBOS



# HOW TO SPECIFY F062

## STEP 1: SEAT HEIGHT

	DIMENSION (L x W)	HEIGHT
	20" x 20"	12"
	23.5" x 23.5"	14"
	31" x 31"	16"
	31" x 31"	18"

## STEP 2: FOOT

### 1" STANDARD FOOT OPTIONS

- Nylon Glide (G1)
- Felt Glide (G1)
- 1" Low Profile Leg (L1) Black

### 3" PREMIUM FOOT OPTIONS

- 3" Rectangle (R3) Black
- 3" Rectangle (R3) Silver
- 3" Caster (C3)

### 6" PREMIUM FOOT OPTIONS

- 6" Mod Leg (M6)
- 6" Rectangle (R6) Black
- 6" Rectangle (R6) Silver
- 6" Triangle (T6) Black
- 6" Triangle (T6) Silver
- 6" Caster (C6)

\*Reference the product breakdown on back for availability.

## STEP 3: GRADE AND TEXTILE

### GRADES & SWATCHES



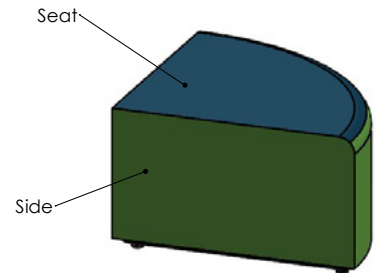
[CLICK TO VIEW »](#)

### FABRIC DIRECTION & COLOR GUIDE



[CLICK TO VIEW »](#)

### COLOR GUIDE



## STEP 4: ACCESSORIES (OPTIONAL)

### EMBROIDERY

- Personalize your furniture with embroidery!
- We can embroider logos up to 12" x 15".

### EMBROIDERY SPECS

[CLICK TO VIEW »](#)



### CAL TB-133

- Optional flame retardant add on.

\*Reference the product breakdown on back for availability.

## STEP 5: CONFIGURE PART NUMBER

### FILL IN YOUR PART NUMBER

F	0	6	2	-		x		x			-			
FAMILY					L	W	H	FOOT						
STEP 1										STEP 2				

### EXAMPLE PART NUMBER

F	0	6	2	-	2	3	5	x	2	3	5	x	1	4	-	R	6
FAMILY					L	W	H	FOOT									

## STEP 6: CONFIGURE DESCRIPTION

### FILL IN YOUR DESCRIPTION

#### 1. SEAT

1. Seat					
LOCATION	GRADE	MANUFACTURER	PATTERN	COLOR	

#### 2. SIDE

2. Side					
LOCATION	GRADE	MANUFACTURER	PATTERN	COLOR	

#### FOOT

NAME/COLOR
------------

#### EMBROIDERY\*

LOCATION	NAME
STEP 4* (OPTIONAL)	

STEP 3

### EXAMPLE DESCRIPTION

#### 1. SEAT

1. Seat	1	Spradling	Silvertex	Sage
LOCATION	GRADE	MANUFACTURER	PATTERN	COLOR

#### 2. SIDE

2. Side	3	Momentum	Tribeca	Fossil
LOCATION	GRADE	MANUFACTURER	PATTERN	COLOR

#### FOOT

6" Rectangle Leg - Black
NAME/COLOR

#### EMBROIDERY\*

Seat	Rocket Logo
LOCATION	NAME

\*Optional add-ons. Reference product breakdown for availability.

INCLUDE ON PURCHASE ORDER

## EXAMPLE CONFIGURATION

F062-23.5x23.5x14-R6

1. Seat: Grade 1, Spradling, Silvertex, Sage | 2. Side: Grade 3, Momentum, Tribeca, Fossil

Foot: 6" Rectangle Leg Black | Embroidery: Seat, Rocket logo

## PRODUCT BREAKDOWN

### LINEAR WEDGE (F062)

Product No.	Dimen./Weight (L x W x H)	FOOT OPTIONS											INTEGRATED POWER OPTION						TFL	Emb.				
		Zip Z	Standard		3" Premium		6" Premium				Standard		3" Premium		6" Premium									
			G1	L1	R3	C3	S16	S29	C6	T6	R6	M6	G1	L1	R3	C3	S16	S29			C6	T6	R6	M6
F062-20x20x12	20" x 20" x 12" 8 lbs.	-	✓	✓	✓	✓	-	-	-	-	-	-	-	-	-	-	-	-	-	-	-	-	-	✓
F062-23.5x23.5x14	23.5" x 23.5" x 14" 12 lbs.	-	✓	✓	✓	✓	-	-	-	✓	✓	✓	-	-	-	-	-	-	-	-	-	-	-	✓
F062-31x31x16	31" x 31" x 16" 21 lbs.	-	✓	✓	✓	✓	-	-	✓	✓	✓	✓	-	-	-	-	-	-	-	-	-	-	-	✓
F062-31x31x18	31" x 31" x 18" 22 lbs.	-	✓	✓	✓	✓	-	-	✓	✓	✓	✓	-	-	-	-	-	-	-	-	-	-	-	✓



ADDITIONAL RESOURCES



CLICK TO VIEW »