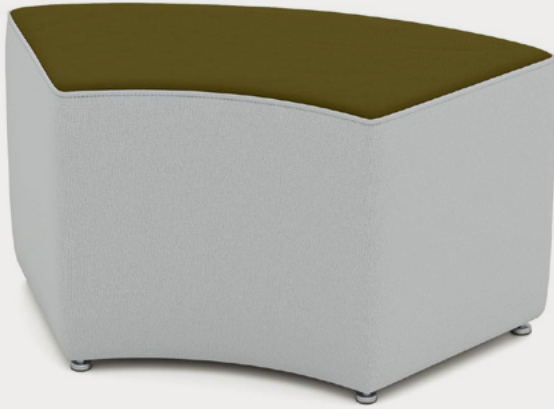


OTTOMAN & BENCH SERIES

ARC BENCH

Product No. F015

This elegant Arc Bench 60 makes for a great accent piece. It goes beyond mere comfort and functionality thanks to its unique design. Use it for lobbies, waiting areas, lounges and just about any gathering space. Display it as a set for a curve or wave effect of use it as a standalone seat.



Shown with 1" Nylon Glides

DETAILS

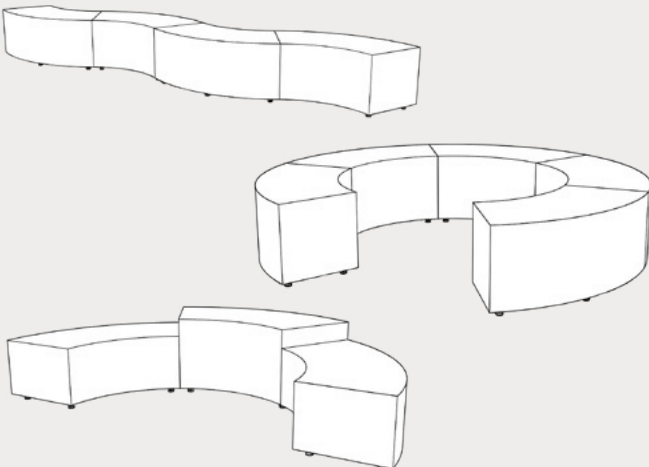
CONSTRUCTION

- Solid foam construction
- MDF baseboard to fit foot options
- Reinforced seams and stitching
- Made in USA
- Backed with a lifetime warranty

MODIFICATION

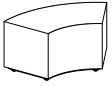
- Seat height
- Textile and placement
- Leg, caster, and foot options
- Fully zippered (no wood base)
- Colored stitching and zipper
- Embroidery
- Power


QUICK COMBOS



HOW TO SPECIFY F015

STEP 1: SEAT HEIGHT

DIMENSION (L x W)	SEAT HEIGHT
	14"
	16"
	18"
38" x 18"	

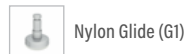
DIMENSION (L x W)	SEAT HEIGHT
	14"
	16"
	18"
44" x 18"	

STEP 2: FOOT AND FULLY ZIPPERED

FULLY ZIPPERED



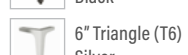
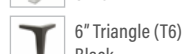
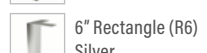
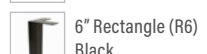
1" STANDARD FOOT OPTIONS



3" PREMIUM FOOT OPTIONS



6" PREMIUM FOOT OPTIONS



**Reference the product breakdown on back for availability.*

STEP 3: GRADE AND TEXTILE

GRADES & SWATCHES



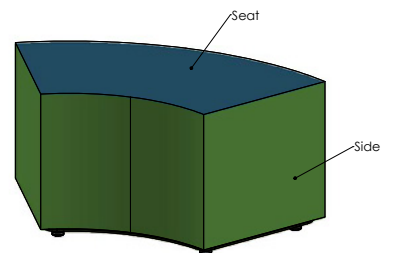
[CLICK TO VIEW »](#)

FABRIC DIRECTION & COLOR GUIDE



[CLICK TO VIEW »](#)

COLOR GUIDE



**Thread will default to match the seat textile.*

STEP 4: ACCESSORIES (OPTIONAL)

INTEGRATED POWER OPTIONS* (PI, PI+)



White



Silver

PI = 1 Power Unit
PI+ = 2 Power Units

EMBROIDERY

- Personalize your furniture with embroidery!
- We can embroider logos up to 12" x 15".

EMBROIDERY SPECS

[CLICK TO VIEW »](#)



CAL TB-133

- Optional flame retardant add on.

**Reference the product breakdown on back for availability.*

STEP 5: CONFIGURE PART NUMBER

FILL IN YOUR PART NUMBER

F	0	1	5	-	x	x	x	x	-					-					
FAMILY					STEP 1					STEP 2				STEP 4* (OPTIONAL)					
L				W				H				FOOT/ZIP				POWER			

EXAMPLE PART NUMBER

F	0	1	5	-	3	8	x	1	8	x	1	4	-	G	1	-	P	1						
FAMILY					L				W				H				FOOT/ZIP				POWER			

STEP 6: CONFIGURE DESCRIPTION

FILL IN YOUR DESCRIPTION

1. SEAT

1. Seat					
LOCATION	GRADE	MANUFACTURER	PATTERN	COLOR	

2. SIDE

2. Side					
LOCATION	GRADE	MANUFACTURER	PATTERN	COLOR	

FOOT

NAME/COLOR

POWER*

COLOR	QUANTITY
-------	----------

EMBROIDERY*

LOCATION	NAME
----------	------

FIRE RETARDANCY*

--

STEP 3

EXAMPLE DESCRIPTION

1. SEAT

1. Seat	1	Spradling	Silvertex	Sage
LOCATION	GRADE	MANUFACTURER	PATTERN	COLOR

2. SIDE

2. Side	3	Momentum	Tribeca	Fossil
LOCATION	GRADE	MANUFACTURER	PATTERN	COLOR

FOOT

1" Nylon Glide	White	1
NAME/COLOR	COLOR	QUANTITY

EMBROIDERY*

Seat	Rocket Logo
LOCATION	NAME

FIRE RETARDANCY*

CAL TB-133

*Optional add-ons. Reference product breakdown for availability.

INCLUDE ON PURCHASE ORDER

EXAMPLE CONFIGURATION

F015-38x18x14-G1-PI

1. Seat: Grade 1, Spradling, Silvertex, Sage | 2. Side: Grade 3, Momentum, Tribeca, Fossil

Foot: 1" Nylon Glide | Power: White, Quantity: 1 | Embroidery: Seat, Rocket logo | CAL TB-133

PRODUCT BREAKDOWN

ARC BENCH (F015)

Product No.	Dimen./Weight (L x W x H)	FOOT OPTIONS											INTEGRATED POWER OPTION						TFL	Emb.				
		Zip Z	Standard		3" Premium		6" Premium						Standard		3" Premium		6" Premium							
			G1	L1	R3	C3	S16	S29	C6	T6	R6	M6	G1	L1	R3	C3	S16	S29			C6	T6	R6	M6
F015-38x18x14	38" x 18" x 14" 14 lbs.	✓	✓	✓	✓	✓	✓	✓	-	-	✓	✓	✓	-	-	-	-	-	-	-	-	-	-	✓
F015-38x18x16	38" x 18" x 16" 16 lbs.	✓	✓	✓	✓	✓	✓	✓	-	-	✓	✓	✓	-	-	-	-	-	-	-	-	-	-	✓
F015-38x18x18	38" x 18" x 18" 17 lbs.	✓	✓	✓	✓	✓	✓	✓	-	-	✓	✓	✓	✓	✓	-	-	-	-	-	-	-	-	✓
F015-44x18x14	44" x 18" x 14" 17 lbs.	✓	✓	✓	✓	✓	✓	✓	-	-	✓	✓	✓	-	-	-	-	-	-	-	-	-	-	✓
F015-44x18x16	44" x 18" x 16" 19 lbs.	✓	✓	✓	✓	✓	✓	✓	-	-	✓	✓	✓	-	-	-	-	-	-	-	-	-	-	✓
F015-44x18x18	44" x 18" x 18" 20 lbs.	✓	✓	✓	✓	✓	✓	✓	-	-	✓	✓	✓	✓	✓	-	-	-	-	-	-	-	-	✓



1770 E. Keating Ave - Muskegon, MI 49442 • Tel: 231.366.4791 • www.fomcore.com

ADDITIONAL RESOURCES



CLICK TO VIEW »