

# ARMLESS SERIES ARMLESS CURVED CORNER

Product No. F061

The Armless Curved Corner is the perfect way to turn a 90 degree corner with our Armless Series. The Armless Corner shares the same seat height, depth and overall height as the Armless, Chair, Loveseat and Sofa.



Shown with 1" Nylon Glides

## DETAILS

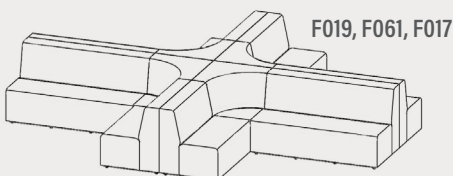
### CONSTRUCTION

- Solid foam construction
- Reinforced seams and stitching
- Wood base to fit foot options
- Made in USA
- Backed with a lifetime warranty

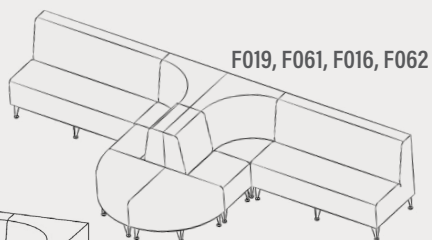
### MODIFICATION

- Seat height
- Textile and placement
- Foot and finish options
- Stitching color
- Embroidery

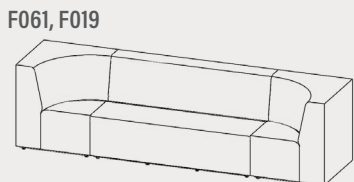
## QUICK COMBOS



F019, F061, F017



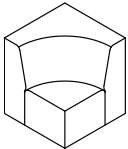
F019, F061, F016, F062



F061, F019




# HOW TO SPECIFY F061

## STEP 1: SEAT HEIGHT

	DIMENSION (L x W x H)	SEAT HEIGHT
	20" x 20" x 23"	12"
23.5" x 23.5" x 27"	14"	
31" x 31" x 33"	16"	
31" x 31" x 35"	18"	

## STEP 2: FOOT

### 1" STANDARD FOOT OPTIONS

-  Nylon Glide (G1)
-  Felt Glide (G1)
-  1" Low Profile Leg (L1)  
Black

### 3" PREMIUM FOOT OPTIONS

-  3" Rectangle (R3)  
Black
-  3" Rectangle (R3)  
Silver
-  3" Caster (C3)

### 6" PREMIUM FOOT OPTIONS

-  Large Sled Leg (S29)  
Silver
-  Large Sled Leg (S29)  
Black
-  6" Mod Leg (M6)
-  6" Rectangle (R6)  
Black
-  6" Rectangle (R6)  
Silver
-  6" Triangle (T6)  
Black
-  6" Triangle (T6)  
Silver
-  6" Caster (C6)

\*Reference the product breakdown on back for availability.

## STEP 3: GRADE AND TEXTILE

### GRADES & SWATCHES



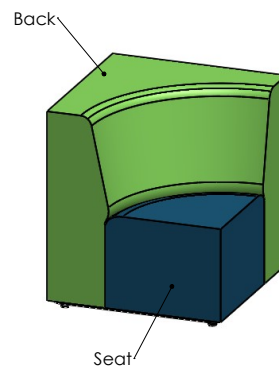
[CLICK TO VIEW »](#)

### FABRIC DIRECTION & COLOR GUIDE



[CLICK TO VIEW »](#)

### COLOR GUIDE



## STEP 4: MODIFICATIONS (OPTIONAL)

### EMBROIDERY

- Personalize your furniture with embroidery!
- We can embroider up to 12" x 15" artwork

### EMBROIDERY SPECS

[CLICK TO VIEW »](#)



### FLAME RETARDANT

- CAL TB-133
- Optional flame retardant add on.

\*Reference the product breakdown on back for availability.

## STEP 5: CONFIGURE PART NUMBER

### FILL IN YOUR PART NUMBER

F	0	6	1	-		x		x			-			
FAMILY					STEP 1						STEP 2			
L				W		H		FOOT						

### EXAMPLE PART NUMBER

F	0	6	1	-	2	3	5	x	2	3	5	x	2	7	-	R	6
FAMILY					L		W		H		FOOT						

## STEP 6: CONFIGURE DESCRIPTION

### FILL IN YOUR DESCRIPTION

#### 1. SEAT

1. Seat				
LOCATION	GRADE	MANUFACTURER	PATTERN	COLOR

#### 2. SIDE

2. Side				
LOCATION	GRADE	MANUFACTURER	PATTERN	COLOR

#### FOOT

NAME/COLOR
------------

#### EMBROIDERY\*

LOCATION	NAME
----------	------

#### FLAME RETARDANT\*

--

STEP 3

### EXAMPLE DESCRIPTION

#### 1. SEAT

1. Seat	1	Spradling	Silvertex	Sage
LOCATION	GRADE	MANUFACTURER	PATTERN	COLOR

#### 2. SIDE

2. Side	3	Momentum	Tribeca	Fossil
LOCATION	GRADE	MANUFACTURER	PATTERN	COLOR

#### FOOT

6" Rectangle Leg - Black
NAME/COLOR

#### EMBROIDERY\*

Seat	Rocket Logo
LOCATION	NAME

#### FLAME RETARDANT\*

CAL TB-133
------------

\*Optional add-ons. Reference product breakdown for availability.

INCLUDE ON PURCHASE ORDER

## EXAMPLE CONFIGURATION

F061-23.5x23.5x27-R6

1. Seat: Grade 1, Spradling, Silvertex, Sage | 2. Side: Grade 3, Momentum, Tribeca, Fossil

Foot: 6" Rectangle Leg Black | Embroidery: Seat, Rocket logo | CAL TB-133

## PRODUCT BREAKDOWN

### ARMLESS CURVED CORNER (F061)

Product No.	Dimen./Weight (L x W x H)	FOOT AND FINISH OPTIONS											INTEGRATED POWER OPTIONS										HPL	Emb.	
		Zip Z	Standard G1 L1		3" Premium R3 C3		6" Premium S16 S29 C6 T6 R6 M6					Standard G1 L1		3" Premium R3 C3		6" Premium S16 S29 C6 T6 R6 M6									
F061-20x20x23	20" x 20" x 23" 12 lbs. (12" Seat Height)	-	✓	✓	✓	✓	-	-	-	-	-	-	-	-	-	-	-	-	-	-	-	-	-	-	✓
F061-23.5x23.5x27	23.5" x 23.5" x 27" 18.5 lbs. (14" Seat Height)	-	✓	✓	✓	✓	-	-	-	-	-	-	-	-	-	-	-	-	-	-	-	-	-	-	✓
F061-31x31x33	31" x 31" x 33" 37 lbs. (16" Seat Height)	-	✓	✓	✓	✓	-	✓	✓	✓	✓	✓	-	-	-	-	-	-	-	-	-	-	-	-	✓
F061-31x31x35	31" x 31" x 35" 39 lbs. (18" Seat Height)	-	✓	✓	✓	✓	-	✓	✓	✓	✓	✓	-	-	-	-	-	-	-	-	-	-	-	-	✓



#### ADDITIONAL RESOURCES



[CLICK TO VIEW »](#)