

# OTTOMAN & BENCH SERIES HALF MOON BENCH

Product No. F031

This elegant Half Moon Bench makes for a great accent piece. It goes beyond mere comfort and functionality thanks to its unique design. Use it for lobbies, waiting areas, lounges and just about any gathering space.



Shown with 1" Nylon Glides

## DETAILS

### CONSTRUCTION

- Solid foam construction
- Wood base to fit foot options
- Reinforced seams and stitching
- Made in USA
- Backed with a lifetime warranty

### MODIFICATION

- Seat height
- Textile and placement
- Foot and finish options
- Fully zippered (no wood base)
- Stitching and zipper colors
- Embroidery
- HPL options

## QUICK COMBOS

IDEA STARTERS COMING SOON



## HOW TO SPECIFY F031

### STEP 1: SEAT HEIGHT

DIMENSION (L x W)	SEAT HEIGHT
 48" x 24"	14"
	16"
	18"

### STEP 2: FOOT AND FULLY ZIPPERED

#### FULLY ZIPPERED



Fully Zippered (Z)

#### 1" STANDARD FOOT OPTIONS



Nylon Glide (G1)



Felt Glide (G1)



1" Low Profile Leg (L1)  
Black

#### 3" PREMIUM FOOT OPTIONS



3" Rectangle (R3)  
Black



3" Rectangle (R3)  
Silver



3" Caster (C3)

#### 6" PREMIUM FOOT OPTIONS



6" Mod Leg (M6)



6" Rectangle (R6)  
Black



6" Rectangle (R6)  
Silver



6" Triangle (T6)  
Black



6" Triangle (T6)  
Silver



6" Caster (C6)

\*Reference the product breakdown on back for availability.

### STEP 3: GRADE AND TEXTILE

#### GRADES & SWATCHES



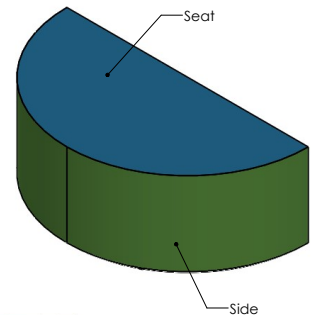
[CLICK TO VIEW »](#)

#### FABRIC DIRECTION & COLOR GUIDE



[CLICK TO VIEW »](#)

#### COLOR GUIDE



\*Thread will default to match the seat textile.

### STEP 4: MODIFICATIONS (OPTIONAL)

#### HPL WORKSURFACE (HPL)

**Black Matte**  
**Black Gloss - Writable Surface**

EDGE-BANDING OPTIONS

Black Matte/Gloss
  Chrome Yellow
  Spectrum Blue

Spectrum Red
  Orange Grove

**Gull Grey**  
w/ matching edgebanding

**Chelsea Maple**  
w/ matching edgebanding

**Dover White Matte**  
**Dover White Gloss - Writable Surface**

EDGE-BANDING OPTIONS

White Matte/Gloss
  Chrome Yellow
  Spectrum Blue

Black Matte/Gloss
  Orange Grove
  Navy Blue

**Black Riftwood**  
w/ matching edgebanding

**White Twill**  
w/ matching edgebanding

## STEP 4 (CONT.): MODIFICATIONS (OPTIONAL)

### EMBROIDERY

- Personalize your furniture with embroidery!
- We can embroider logos up to 12" x 15".

### EMBROIDERY SPECS

[CLICK TO VIEW »](#)



### FLAME RETARDANT

- CAL TB-133
- Optional flame retardant add on.

\*Reference the product breakdown for availability.

## STEP 5: CONFIGURE PART NUMBER

### FILL IN YOUR PART NUMBER

F	0	3	1	-	L	x	W	x	H	-	FOOT/ZIP	
FAMILY					STEP 1					STEP 2		

### EXAMPLE PART NUMBER

F	0	3	1	-	4	8	x	2	4	x	1	8	-	R	6
FAMILY					L		W		H		FOOT/ZIP				

## STEP 6: CONFIGURE DESCRIPTION

### FILL IN YOUR DESCRIPTION

#### 1. SEAT

1. Seat				
LOCATION	GRADE	MANUFACTURER	PATTERN	COLOR

#### 2. SIDE

2. Side				
LOCATION	GRADE	MANUFACTURER	PATTERN	COLOR

#### FOOT

NAME/COLOR
------------

#### FIRE RETARDANCY\*

--

#### EMBROIDERY\*

LOCATION	NAME
----------	------

STEP 3

### EXAMPLE DESCRIPTION

#### 1. SEAT

1. Seat	1	Spradling	Silvertex	Sage
LOCATION	GRADE	MANUFACTURER	PATTERN	COLOR

#### 2. SIDE

2. Side	3	Momentum	Tribeca	Fossil
LOCATION	GRADE	MANUFACTURER	PATTERN	COLOR

#### FOOT

6" Rectangle Leg - Black
NAME/COLOR

#### FIRE RETARDANCY\*

CAL TB-133

#### EMBROIDERY\*

Seat	Rocket Logo
LOCATION	NAME

\*Optional add-ons. Reference product breakdown for availability.

INCLUDE ON PURCHASE ORDER

## EXAMPLE CONFIGURATION

F031-48x24x18-R6

1. Seat: Grade 1, Spradling, Silvertex, Sage | 2. Side: Grade 3, Momentum, Tribeca, Fossil

Foot: 6" Rectangle Leg Black | Embroidery: Seat, Rocket logo | CAL TB-133

## PRODUCT BREAKDOWN

### HALF MOON BENCH (F031)

Product No.	Dimen./Weight (L x W x H)	FOOT AND FINISH OPTIONS										INTEGRATED POWER OPTIONS										HPL	Emb.	
		Zip Z	Standard		3" Premium		6" Premium						Standard		3" Premium		6" Premium							
		G1	L1	R3	C3	S16	S29	C6	T6	R6	M6	G1	L1	R3	C3	S16	S29	C6	T6	R6	M6			
F031-48x24x14	48" x 24" x 14" 22 lbs.	✓	✓	✓	✓	✓	-	-	✓	✓	✓	-	-	-	-	-	-	-	-	-	-	-	✓	✓
F031-48x24x16	48" x 24" x 16" 23.5 lbs.	✓	✓	✓	✓	✓	-	-	✓	✓	✓	-	-	-	-	-	-	-	-	-	-	-	✓	✓
F031-48x24x18	48" x 24" x 18" 25.5 lbs.	✓	✓	✓	✓	✓	-	-	✓	✓	✓	-	-	-	-	-	-	-	-	-	-	-	✓	✓



1770 E. Keating Ave - Muskegon, MI 49442 • Tel: 231.366.4791 • [www.fomcore.com](http://www.fomcore.com)

### ADDITIONAL RESOURCES



[CLICK TO VIEW »](#)