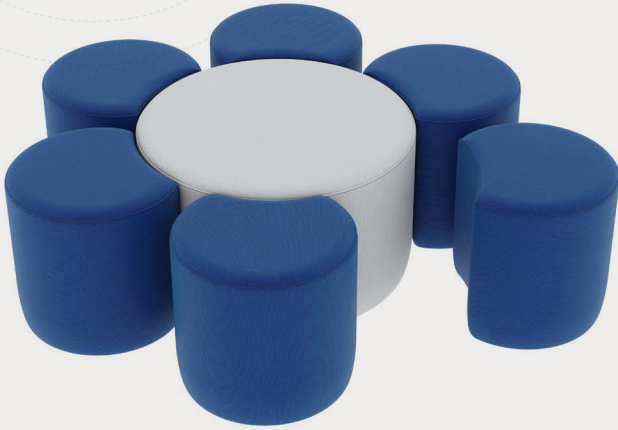


CREATE YOUR COMBO DAISY COMBO

Product Numbers F005, F101



DETAILS

CONSTRUCTION

- Solid foam construction
- Wood base to fit foot options
- Reinforced seams and stitching
- Made in USA
- Backed with a lifetime warranty

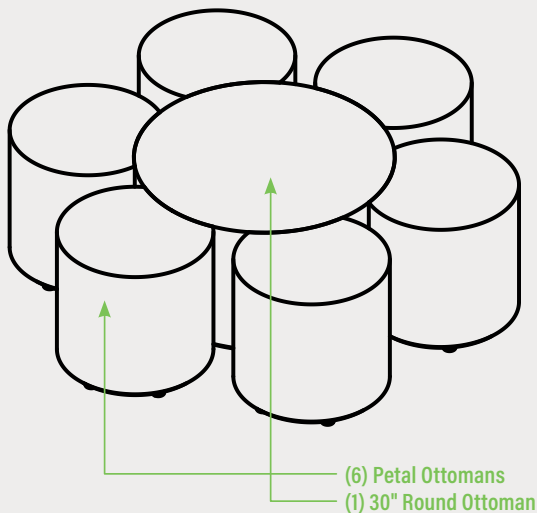
MODIFICATION

- Seat height
- Textile and placement
- Foot and finish options
- Fully zippered (no wood base)
- Stitching and zipper colors
- HPL work surface
- Embroidery
- Power Options

WEATHER RESISTANT
See series page for more details. »



COMBO BREAKDOWN

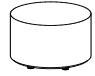


Fōmcore
SERVE. CREATE. INSPIRE.

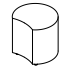
HOW TO SPECIFY A DAISY COMBO

STEP 1: SEAT HEIGHT

30" ROUND OTTOMAN

DIMENSION (DIA)	SEAT HEIGHT
 30"	12"
	14"
	16"
	18"
	20"

PETAL OTTOMAN

DIMENSION (DIA)	SEAT HEIGHT
 18"	12"
	14"
	16"
	18"
	20"

STEP 2: FOOT AND FULLY ZIPPERED

FULLY ZIPPERED



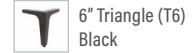
1" STANDARD FOOT OPTIONS



3" PREMIUM FOOT OPTIONS



6" PREMIUM FOOT OPTIONS



*Reference the product breakdown on back for availability.

STEP 3: GRADE AND TEXTILE

GRADES & SWATCHES



[CLICK TO VIEW »](#)

FABRIC DIRECTION & COLOR GUIDES

Round Ottoman



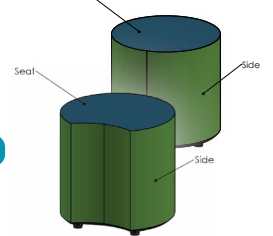
[CLICK TO VIEW »](#)

Petal Ottoman



[CLICK TO VIEW »](#)

COLOR GUIDES



*Thread will default to match the seat textile.


STEP 4: MODIFICATIONS (OPTIONAL)

HPL WORKSURFACE (HPL)

 **Black Matte**
Black Gloss - Writable Surface

EDGE-BANDING OPTIONS

 Black Matte/Gloss  Chrome Yellow  Spectrum Blue

 Spectrum Red  Orange Grove

 **Gull Grey**
w/ matching edgbanding

 **Chelsea Maple**
w/ matching edgbanding

 **Dover White Matte**
Dover White Gloss - Writable Surface

EDGE-BANDING OPTIONS

 White Matte/Gloss  Chrome Yellow  Spectrum Blue

 Black Matte/Gloss  Orange Grove  Navy Blue

 **Black Riftwood**
w/ matching edgbanding

 **White Twill**
w/ matching edgbanding

PRODUCT BREAKDOWN

DAISY COMBO

Description/ Product No.	Dimen./Weight (Dia.x H)	FOOT OPTIONS										INTEGRATED POWER OPTION										HPL	Emb.		
		Zip		Standard		3" Premium		6" Premium						Standard		3" Premium		6" Premium							
		Z		G1	L1	R3	C3	S16	S29	C6	T6	R6	M6	G1	L1	R3	C3	S16	S29	C6	T6			R6	M6
30" Round Ottoman F005-30x12	30" x 12" 19 lbs.	✓		✓	✓	✓	✓	-	-	✓	✓	✓	✓	-	-	-	-	-	-	-	-	-	-	✓	✓
30" Round Ottoman F005-30x14	30" x 14" 19 lbs.	✓		✓	✓	✓	✓	-	-	✓	✓	✓	✓	-	-	-	-	-	-	-	-	-	-	✓	✓
30" Round Ottoman F005-30x16	30" x 16" 20 lbs.	✓		✓	✓	✓	✓	-	-	✓	✓	✓	✓	-	-	-	-	-	-	-	-	-	-	✓	✓
30" Round Ottoman F005-30x18	30" x 18" 21 lbs.	✓		✓	✓	✓	✓	-	-	✓	✓	✓	✓	✓	✓	-	-	-	-	-	-	-	-	✓	✓
30" Round Ottoman F005-30x20	30" x 20" 22 lbs.	✓		✓	✓	✓	✓	-	-	✓	✓	✓	✓	✓	✓	-	-	-	-	-	-	-	-	✓	✓
Petal Ottoman F101-18x12	18" x 12" 7 lbs.	✓		✓	✓	✓	-	-	-	-	-	✓	✓	-	-	-	-	-	-	-	-	-	-	-	✓
Petal Ottoman F101-18x14	18" x 14" 7 lbs.	✓		✓	✓	✓	-	-	-	-	-	✓	✓	-	-	-	-	-	-	-	-	-	-	-	✓
Petal Ottoman F101-18x16	18" x 16" 8 lbs.	✓		✓	✓	✓	-	-	-	-	-	✓	✓	-	-	-	-	-	-	-	-	-	-	-	✓
Petal Ottoman F101-18x18	18" x 18" 8 lbs.	✓		✓	✓	✓	-	-	-	-	-	✓	✓	-	-	-	-	-	-	-	-	-	-	-	✓
Petal Ottoman F101-18x20	18" x 20" 9 lbs.	✓		✓	✓	✓	-	-	-	-	-	✓	✓	-	-	-	-	-	-	-	-	-	-	-	✓



1770 E. Keating Ave - Muskegon, MI 49442 • Tel: 231.366.4791 • www.fomcore.com

**ADDITIONAL
RESOURCES**



[CLICK TO VIEW »](#)