

# CREATE YOUR COMBO BOWTIE COMBO

Product Numbers F005, F077



## DETAILS

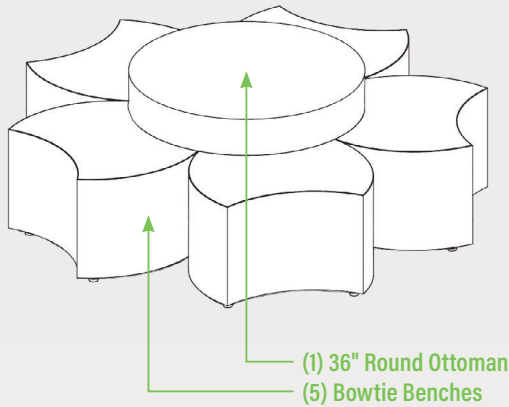
### CONSTRUCTION

- Solid foam construction
- Wood base to fit out options
- Reinforced seams and stitching
- Made in USA
- Backed with a lifetime warranty

### MODIFICATION

- Seat height
- Textile and placement
- Foot and finish options
- Fully zippered (no wood base)
- Stitching and zipper color
- HPL work surface
- Power options
- Embroidery

## COMBO BREAKDOWN



## HOW TO SPECIFY A BOWTIE COMBO

### STEP 1: SEAT HEIGHT

ROUND OTTOMAN		BOWTIE BENCH	
DIMENSION (DIA)	SEAT HEIGHT	DIMENSION (L x W)	SEAT HEIGHT
 36"	18"	 28" x 21"	14"
	24"		18"

### STEP 2: FOOT AND FULLY ZIPPERED

#### FULLY ZIPPERED



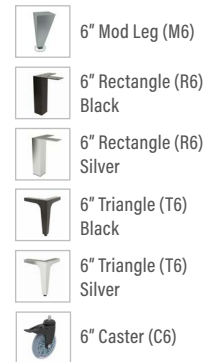
#### 1" STANDARD FOOT OPTIONS



#### 3" PREMIUM FOOT OPTIONS



#### 6" PREMIUM FOOT OPTIONS



\*Reference the product breakdown on back for availability.

### STEP 3: GRADE AND TEXTILE

#### GRADES & SWATCHES



[CLICK TO VIEW »](#)

#### FABRIC DIRECTION & COLOR GUIDES

##### Round Ottoman



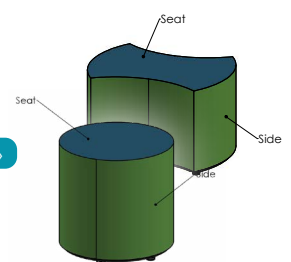
[CLICK TO VIEW »](#)

##### Bowtie Bench



[CLICK TO VIEW »](#)

#### COLOR GUIDES



\*Thread will default to match the seat textile.

### STEP 4: MODIFICATIONS (OPTIONAL)

#### HPL WORKSURFACE (HPL)

**Black Matte**  
**Black Gloss - Writable Surface**

#### EDGE-BANDING OPTIONS

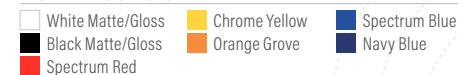


**Gull Grey**  
w/ matching edgebanding

**Chelsea Maple**  
w/ matching edgebanding

**Dover White Matte**  
**Dover White Gloss - Writable Surface**

#### EDGE-BANDING OPTIONS



**Black Riftwood**  
w/ matching edgebanding

**White Twill**  
w/ matching edgebanding

## STEP 4 (CONT.): MODIFICATIONS (OPTIONAL)

### EMBROIDERY

- Personalize your furniture with embroidery!
- We can embroider up to 12" x 15" artwork

\*Reference the product breakdown for availability.

### EMBROIDERY SPECS

[CLICK TO VIEW »](#)



### FLAME RETARDANT

- CAL TB-133
- Optional flame retardant add on.

### INTEGRATED POWER OPTIONS\* (PI, PI+)



White



Silver

PI = 1 Power Unit  
PI+ = 2 Power Units

## STEP 5: CONFIGURE PART NUMBER

### FILL IN YOUR PART NUMBER

[ ][ ][ ][ ]	-	[ ][ ] x [ ][ ] x [ ][ ]	-	[ ][ ][ ]	-	[ ][ ][ ]	-	[ ][ ][ ]	-	[ ][ ][ ]
FAMILY		L DIA H		FOOT/ZIP		HPL		POWER		
		STEP 1		STEP 2		STEP 4* (OPTIONAL)				

### EXAMPLE PART NUMBER

F077	-	28	x	21	x	14	-	G1	-	
FAMILY		L		DIA		H		FOOT/ZIP		HPL
										POWER

### FILL IN YOUR DESCRIPTION

#### 1. SEAT

1. Seat	[ ][ ][ ]	[ ][ ][ ]	[ ][ ][ ]	[ ][ ][ ]	[ ][ ][ ]
LOCATION	GRADE	MANUFACTURER	PATTERN	COLOR	

#### 2. SIDE

2. Side	[ ][ ][ ]	[ ][ ][ ]	[ ][ ][ ]	[ ][ ][ ]	[ ][ ][ ]
LOCATION	GRADE	MANUFACTURER	PATTERN	COLOR	

#### FOOT

[ ][ ][ ]
NAME/COLOR

#### POWER\*

[ ][ ][ ]	[ ][ ][ ]
COLOR	QUANTITY

#### HPL WORKSURFACE\*

[ ][ ][ ]	[ ][ ][ ]
HPL COLOR	EDGE BANDING COLOR

#### EMBROIDERY\*

[ ][ ][ ]	[ ][ ][ ]
LOCATION	NAME

#### FLAME RETARDANT\*

[ ][ ][ ]
-----------

### EXAMPLE DESCRIPTION

#### 1. SEAT

1. Seat	1	Spradling	Silvertex	Sage
LOCATION	GRADE	MANUFACTURER	PATTERN	COLOR

#### 2. SIDE

2. Side	3	Momentum	Tribeca	Fossil
LOCATION	GRADE	MANUFACTURER	PATTERN	COLOR

#### FOOT

1" Nylon Glide
NAME/COLOR

#### POWER\*

White	1
COLOR	QUANTITY

#### HPL WORKSURFACE\*

Black Matte	Spectrum Red
HPL COLOR	EDGE BANDING COLOR

#### EMBROIDERY\*

Seat	Rocket Logo
LOCATION	NAME

#### FLAME RETARDANT\*

CAL TB-133
------------

\*Optional add-ons. Reference product breakdown for availability.

INCLUDE ON PURCHASE ORDER

### EXAMPLE CONFIGURATION

REPEAT STEP 5 & 6 FOR EACH PRODUCT NUMBER.

F077-28x21x14-G1

1. Seat: Grade 1, Spradling, Silvertex, Sage | 2. Side: Grade 3, Momentum, Tribeca, Fossil

Foot: 1" Nylon Glide | Embroidery: Seat, Rocket logo | HPL Worksurface: Black Matte, Edgebanding: Spectrum Red | CAL TB-133

### PRODUCT BREAKDOWN

## BOWTIE COMBO

Description/ Product No.	Dimen./Weight (L x W x H & Dia. x H)	FOOT OPTIONS												INTEGRATED POWER OPTION										HPL	Emb.
		Zip Z	Standard		3" Premium		6" Premium				Standard		3" Premium		6" Premium										
			G1	L1	R3	C3	S16	S29	C6	T6	R6	M6	G1	L1	R3	C3	S16	S29	C6	T6	R6	M6			
36" Round Ottoman F005-36x18	36" x 18" 31 lbs.	✓	✓	✓	✓	✓	-	-	✓	-	✓	✓	✓	-	-	-	-	-	-	-	-	-	✓	✓	
36" Round Ottoman F005-36x24	36" x 24" 37 lbs.	✓	✓	✓	✓	✓	-	-	✓	-	✓	✓	✓	-	-	-	-	-	-	-	-	-	✓	✓	
Bowtie Bench F077-28x21x14	28" x 21" x 14" 12 lbs.	✓	✓	✓	✓	✓	-	-	-	✓	✓	✓	-	-	-	-	-	-	-	-	-	-	-	✓	
Bowtie Bench F077-28x21x18	28" x 21" x 18" 14 lbs.	✓	✓	✓	✓	✓	-	-	-	✓	✓	✓	-	-	-	-	-	-	-	-	-	-	-	✓	

**Fomcore**  
SERVE. CREATE. INSPIRE.

### ADDITIONAL RESOURCES



1770 E. Keating Ave - Muskegon, MI 49442 • Tel: 231.366.4791 • [www.fomcore.com](http://www.fomcore.com)

[CLICK TO VIEW »](#)