

OTTOMAN & BENCH SERIES - OTTOMANS

# ROK DROP

Product No. F166

Our ROK Drop active seating solution is sure to be a hit with your active learners. Solid foam, single-cut construction guarantees that learners will be comfortable, safe, and free to move. The rounded base allows energized students to satisfy their urge to move without distracting their peers. The result is a more comfortable, attentive, and ready to learn student.



## DETAILS

### CONSTRUCTION

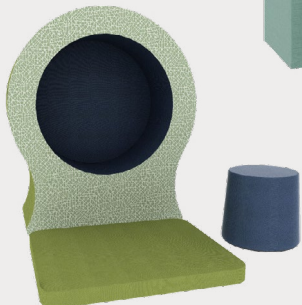
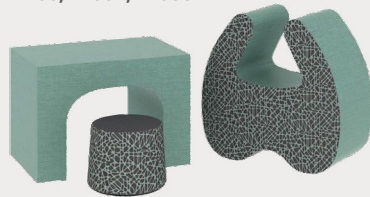
- Solid foam construction
- Reinforced seams and stitching
- Grippy dot, non-skid base
- Made in USA
- Backed with a lifetime warranty

### MODIFICATION

- Seat height
- Textile and placement
- Stitching color
- Embroidery

## QUICK COMBOS





F166, FK034, FK033



F166, F091, F960

# HOW TO SPECIFY F166

## STEP 1: SEAT HEIGHT

DIMENSION (DIA x H)	SEAT DIAMETER	DIMENSION (DIA x H)	SEAT DIAMETER
 14" x 12"	12"	 14" x 14"	12"
 18" x 16"	16"	 18" x 18"	16"

## STEP 2: FULLY ZIPPERED

### FULLY ZIPPERED



Fully Zippered (Z)

\*Reference the product breakdown on back for availability.

## STEP 3: GRADE AND TEXTILE

### GRADES & SWATCHES



[CLICK TO VIEW »](#)

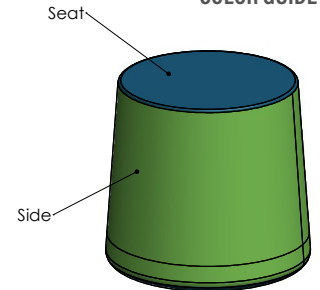
### FABRIC DIRECTION & COLOR GUIDE



[CLICK TO VIEW »](#)

\*Thread will default to match the seat textile.

### COLOR GUIDE



## STEP 4: MODIFICATIONS (OPTIONAL)

### EMBROIDERY

- Personalize your furniture with embroidery!
- We can embroider up to 12" x 15" artwork

### EMBROIDERY SPECS

[CLICK TO VIEW »](#)



### FLAME RETARDANT

- CAL TB-133 - Optional flame retardant add on.

\*Reference the product breakdown on back for availability.

## STEP 5: CONFIGURE PART NUMBER

### FILL IN YOUR PART NUMBER

F	1	6	6	-		x		-	Z	
FAMILY					DIA		H		ZIP	
					STEP 1			STEP 2		

### EXAMPLE PART NUMBER

F	1	6	6	-	1	8	x	1	8	-	Z	
FAMILY					DIA		H	ZIP				

## STEP 6: CONFIGURE DESCRIPTION

### FILL IN YOUR DESCRIPTION

#### 1. SEAT

1. Seat				
LOCATION	GRADE	MANUFACTURER	PATTERN	COLOR

#### 2. SIDE

2. Side				
LOCATION	GRADE	MANUFACTURER	PATTERN	COLOR

#### EMBROIDERY\*

LOCATION	NAME

#### FIRE RETARDANCY\*

--

STEP 3

### EXAMPLE DESCRIPTION

#### 1. SEAT

1. Seat	1	Spradling	Silvertex	Sage
LOCATION	GRADE	MANUFACTURER	PATTERN	COLOR

#### 2. SIDE

2. Side	3	Momentum	Tribeca	Fossil
LOCATION	GRADE	MANUFACTURER	PATTERN	COLOR

#### EMBROIDERY\*

Seat	Rocket Logo
LOCATION	NAME

#### FIRE RETARDANCY\*

CAL TB-133
------------

\*Optional add-ons. Reference product breakdown for availability.

INCLUDE ON PURCHASE ORDER

### EXAMPLE CONFIGURATION

F166-18x18-Z

1. Seat: Grade 1, Spradling, Silvertex, Sage | 2. Side: Grade 3, Momentum, Tribeca, Fossil

Embroidery: Seat, Rocket logo | CAL TB-133

### PRODUCT BREAKDOWN

## ROK DROP (F166)

Product No.	Dimen./Weight (Dia x H)	FOOT AND FINISH OPTIONS											INTEGRATED POWER OPTIONS						HPL	Emb.		
		Zip Z	Standard G1 L1		3" Premium R3 C3		6" Premium S16 S29 C6 T6 R6 M6				Standard G1 L1		3" Premium R3 C3		6" Premium S16 S29 C6 T6 R6 M6							
F166-14x12 (12.5" Seat Diameter)	14" x 12" 2 lbs.	✓	-	-	-	-	-	-	-	-	-	-	-	-	-	-	-	-	-	-	-	✓
F166-14x14 (12" Seat Diameter)	14" x 14" 3 lbs.	✓	-	-	-	-	-	-	-	-	-	-	-	-	-	-	-	-	-	-	-	✓
F166-18x16 (16" Seat Diameter)	18" x 16" 4.5 lbs.	✓	-	-	-	-	-	-	-	-	-	-	-	-	-	-	-	-	-	-	-	✓
F166-18x18 (16" Seat Diameter)	18" x 18" 6 lbs.	✓	-	-	-	-	-	-	-	-	-	-	-	-	-	-	-	-	-	-	-	✓



#### ADDITIONAL RESOURCES



[CLICK TO VIEW »](#)