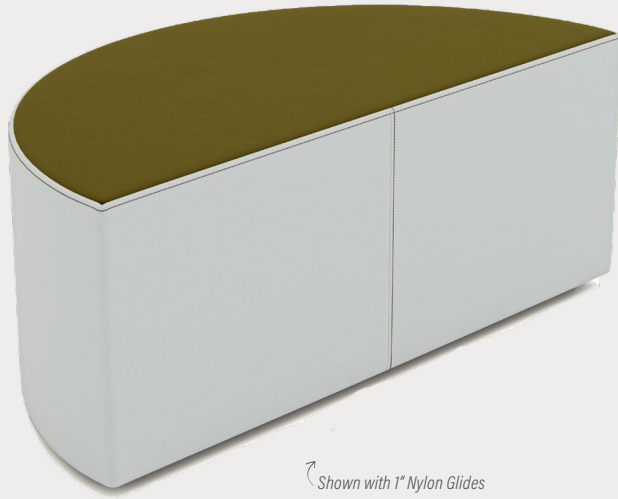


OTTOMAN & BENCH SERIES - BENCHES

HALF MOON BENCH

Product No. F031

This elegant Half Moon Bench makes for a great accent piece. It goes beyond mere comfort and functionality thanks to its unique design. Use it for lobbies, waiting areas, lounges and just about any gathering space.



DETAILS

CONSTRUCTION

- Solid foam construction
- Wood base to fit foot options
- Reinforced seams and stitching
- Made in USA
- Backed with a lifetime warranty

MODIFICATION

- Seat height
- Textile and placement
- Foot and finish options
- Fully zippered (no wood base)
- Stitching and zipper colors
- Embroidery
- HPL options

QUICK COMBOS

IDEA STARTERS COMING SOON

HOW TO SPECIFY F031

STEP 1: SEAT HEIGHT

DIMENSION (L x W)	SEAT HEIGHT
	14"
	16"
	18"

STEP 2: FOOT AND FULLY ZIPPERED

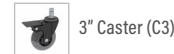
FULLY ZIPPERED



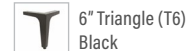
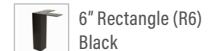
1\"/>



3\"/>



6\"/>



**Reference the product breakdown on back for availability.*

STEP 3: GRADE AND TEXTILE

GRADES & SWATCHES



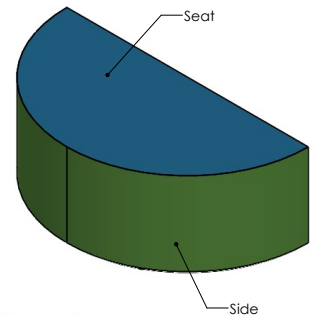
[CLICK TO VIEW »](#)

FABRIC DIRECTION & COLOR GUIDE



[CLICK TO VIEW »](#)

COLOR GUIDE



**Thread will default to match the seat textile.*

STEP 4: MODIFICATIONS (OPTIONAL)



HPL & EDGEBANDING GRADES & OPTIONS

[CLICK TO VIEW »](#)



STEP 4 (CONT.): MODIFICATIONS (OPTIONAL)

EMBROIDERY

- Personalize your furniture with embroidery!
- We can embroider logos up to 12" x 15".

EMBROIDERY SPECS

[CLICK TO VIEW »](#)



FLAME RETARDANT

- CAL TB-133 - Optional flame retardant add-on.

*Reference the product breakdown for availability.

STEP 5: CONFIGURE PART NUMBER

FILL IN YOUR PART NUMBER

F	0	3	1	-		x		x		-			
FAMILY					L	W	H	FOOT/ZIP					
STEP 1								STEP 2					

EXAMPLE PART NUMBER

F	0	3	1	-	4	8	x	2	4	x	1	8	-	R	6
FAMILY					L	W	H	FOOT/ZIP							

STEP 6: CONFIGURE DESCRIPTION

FILL IN YOUR DESCRIPTION

1. SEAT

1. Seat				
LOCATION	GRADE	MANUFACTURER	PATTERN	COLOR

2. SIDE

2. Side				
LOCATION	GRADE	MANUFACTURER	PATTERN	COLOR

FOOT

NAME/COLOR

FIRE RETARDANCY*

--

EMBROIDERY*

LOCATION	NAME

STEP 3

EXAMPLE DESCRIPTION

1. SEAT

1. Seat	1	Spradling	Silvertex	Sage
LOCATION	GRADE	MANUFACTURER	PATTERN	COLOR

2. SIDE

2. Side	3	Momentum	Tribeca	Fossil
LOCATION	GRADE	MANUFACTURER	PATTERN	COLOR

FOOT

6" Rectangle Leg - Black
NAME/COLOR

FIRE RETARDANCY*

CAL TB-133

EMBROIDERY*

Seat	Rocket Logo
LOCATION	NAME

*Optional add-ons. Reference product breakdown for availability.

INCLUDE ON PURCHASE ORDER

EXAMPLE CONFIGURATION

F031-48x24x18-R6

1. Seat: Grade 1, Spradling, Silvertex, Sage | 2. Side: Grade 3, Momentum, Tribeca, Fossil

Foot: 6" Rectangle Leg Black | Embroidery: Seat, Rocket logo | CAL TB-133

PRODUCT BREAKDOWN

HALF MOON BENCH (F031)

Product No.	Dimen./Weight (L x W x H)	FOOT AND FINISH OPTIONS										INTEGRATED POWER OPTIONS										HPL	Emb.	
		Zip Z	Standard G1 L1		3" Premium R3 C3		6" Premium S16 S29 C6 T6 R6 M6						Standard G1 L1		3" Premium R3 C3 S16 S29 C6 T6 R6 M6									
F031-48x24x14	48" x 24" x 14" 22 lbs.	✓	✓	✓	✓	✓	-	-	✓	✓	✓	✓	-	-	-	-	-	-	-	-	-	-	✓	✓
F031-48x24x16	48" x 24" x 16" 23.5 lbs.	✓	✓	✓	✓	✓	-	-	✓	✓	✓	✓	-	-	-	-	-	-	-	-	-	-	✓	✓
F031-48x24x18	48" x 24" x 18" 25.5 lbs.	✓	✓	✓	✓	✓	-	-	✓	✓	✓	✓	-	-	-	-	-	-	-	-	-	-	✓	✓



1770 E. Keating Ave - Muskegon, MI 49442 • Tel: 231.366.4791 • www.fomcore.com

ADDITIONAL RESOURCES



[CLICK TO VIEW »](#)