

OTTOMAN & BENCH - LOTUS SERIES

ROK DROP

Product No. F166

Our ROK Drop active seating solution is sure to be a hit with your active learners. Solid foam, single-cut construction guarantees that learners will be comfortable, safe, and free to move. The rounded base allows energized students to satisfy their urge to move without distracting their peers. The result is a more comfortable, attentive, and ready to learn student.



DETAILS

CONSTRUCTION

- Solid foam construction
- Reinforced seams and stitching
- Grippy dot, non-skid base
- Made in USA
- Backed with a lifetime warranty





MODIFICATION

- Seat height
- Textile and placement
- Stitching color
- Embroidery



HOW TO SPECIFY F166

STEP 1: SEAT HEIGHT

DIMENSION (DIA x H)	SEAT DIAMETER	DIMENSION (DIA x H)	SEAT DIAMETER
 14" x 12"	12"	 14" x 14"	12"
 18" x 16"	16"	 18" x 18"	16"

STEP 2: FULLY ZIPPERED

FULLY ZIPPERED



Fully Zippered (Z)

*Reference the product breakdown on back for availability.

STEP 3: GRADE AND TEXTILE

GRADES & SWATCHES



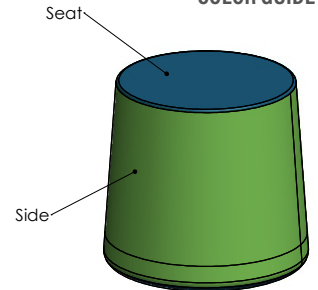
[CLICK TO VIEW »](#)

FABRIC DIRECTION & COLOR GUIDE



[CLICK TO VIEW »](#)

COLOR GUIDE



*Thread will default to match the seat textile.

STEP 4: MODIFICATIONS (OPTIONAL)

EMBROIDERY

- Personalize your furniture with embroidery!
- We can embroider up to 12" x 15" artwork

EMBROIDERY SPECS

[CLICK TO VIEW »](#)



FLAME RETARDANT

- CAL TB-133
- Optional flame retardant add on.

*Reference the product breakdown on back for availability.

STEP 5: CONFIGURE PART NUMBER

FILL IN YOUR PART NUMBER

F	1	6	6	-		x		-	Z	
FAMILY					DIA		H		ZIP	
					STEP 1			STEP 2		

EXAMPLE PART NUMBER

F	1	6	6	-	1	8	x	1	8	-	Z	
FAMILY					DIA		H	ZIP				

STEP 6: CONFIGURE DESCRIPTION

FILL IN YOUR DESCRIPTION

1. SEAT

1. Seat				
LOCATION	GRADE	MANUFACTURER	PATTERN	COLOR

2. SIDE

2. Side				
LOCATION	GRADE	MANUFACTURER	PATTERN	COLOR

EMBROIDERY*

LOCATION	NAME

FIRE RETARDANCY*

--

STEP 3

EXAMPLE DESCRIPTION

1. SEAT

1. Seat	1	Spradling	Silvertex	Sage
LOCATION	GRADE	MANUFACTURER	PATTERN	COLOR

2. SIDE

2. Side	3	Momentum	Tribeca	Fossil
LOCATION	GRADE	MANUFACTURER	PATTERN	COLOR

EMBROIDERY*

Seat	Rocket Logo
LOCATION	NAME

FIRE RETARDANCY*

CAL TB-133

*Optional add-ons. Reference product breakdown for availability.

INCLUDE ON PURCHASE ORDER

EXAMPLE CONFIGURATION

F166-18x18-Z

1. Seat: Grade 1, Spradling, Silvertex, Sage | 2. Side: Grade 3, Momentum, Tribeca, Fossil

Embroidery: Seat, Rocket logo | CAL TB-133

PRODUCT BREAKDOWN

ROK DROP (F166)

Product No.	Dimen./Weight (Dia x H)	FOOT AND FINISH OPTIONS											INTEGRATED POWER OPTIONS										HPL	Emb.	
		Zip Z	Standard		3" Premium		6" Premium					Standard		3" Premium		6" Premium									
			G1	L1	R3	C3	S16	S29	C6	T6	R6	M6	G1	L1	R3	C3	S16	S29	C6	T6	R6	M6			
F166-14x12 (12.5" Seat Diameter)	14" x 12" 2 lbs.	✓	-	-	-	-	-	-	-	-	-	-	-	-	-	-	-	-	-	-	-	-	-	-	✓
F166-14x14 (12" Seat Diameter)	14" x 14" 3 lbs.	✓	-	-	-	-	-	-	-	-	-	-	-	-	-	-	-	-	-	-	-	-	-	-	✓
F166-18x16 (16" Seat Diameter)	18" x 16" 4.5 lbs.	✓	-	-	-	-	-	-	-	-	-	-	-	-	-	-	-	-	-	-	-	-	-	-	✓
F166-18x18 (16" Seat Diameter)	18" x 18" 6 lbs.	✓	-	-	-	-	-	-	-	-	-	-	-	-	-	-	-	-	-	-	-	-	-	-	✓



1770 E. Keating Ave - Muskegon, MI 49442 • Tel: 231.366.4791 • www.fomcore.com

ADDITIONAL RESOURCES



CLICK TO VIEW »