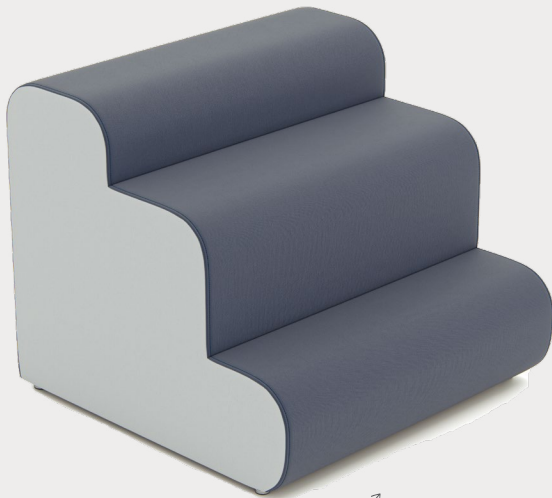


STEP SERIES | BUBBLE STEPS

# BUBBLE THREE STEP

Product No. F156

The Bubble Three Step brings a fresh twist to our classic Step Series. Featuring rounded edges, this piece blends eye-catching design with ergonomic support, making it a standout seat in any space. Our steps are crafted from solid foam, making them lightweight and easy to move. The absence of hard edges ensures safety for learners of all ages, while the versatile design allows for collaborative seating arrangements. Combine it with other pieces from the Bubble Step Series to create flexible seating solutions perfect for lobbies, common spaces, media centers, the spaces in between, and more.



Shown with 1" Nylon Glides

## DETAILS

### CONSTRUCTION

- Solid foam construction
- Wood base to fit foot options
- Reinforced seams and stitching
- Made in USA
- Backed with a lifetime warranty

### MODIFICATION

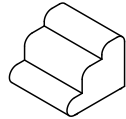
- Textile and placement
- Foot and Finish options
- Stitching color
- Embroidery

## QUICK COMBOS

IDEA STARTERS COMING SOON

# HOW TO SPECIFY F156

## STEP 1: HEIGHT

DIMENSION (L x W)	HEIGHT	STEP 1 HEIGHT	STEP 2 HEIGHT
 38" x 38"	32"	11"	13"

## STEP 2: FOOT

### 1" STANDARD FOOT OPTIONS

-  Nylon Glide (G1)
-  Felt Glide (G1)
-  1" Low Profile Leg (L1)  
Black

\*Reference the product breakdown on back for availability.

## STEP 3: GRADE AND TEXTILE

### GRADES & SWATCHES



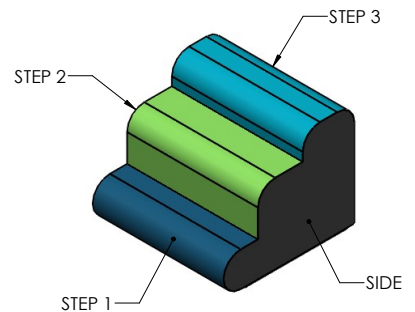
[CLICK TO VIEW »](#)

### FABRIC DIRECTON & COLOR GUIDE



[CLICK TO VIEW »](#)

### COLOR GUIDE



\*Thread will default to match the seat textile.

## STEP 4: MODIFICATIONS (OPTIONAL)

### EMBROIDERY

- Personalize your furniture with embroidery!
- We can embroider up to 12" x 15" artwork

### FLAME RETARDANT

- CAL TB-133
- Optional flame retardant add on.

### EMBROIDERY SPECS

[CLICK TO VIEW »](#)



\*Reference the product breakdown on back for availability.

## STEP 5: CONFIGURE PART NUMBER

### FILL IN YOUR PART NUMBER

F	1	5	6	-	3	8	x	3	8	x	3	2	-						
FAMILY					STEP 1								STEP 2						
LOCATION					GRADE				MANUFACTURER				PATTERN				COLOR		

### EXAMPLE PART NUMBER

F	1	5	6	-	3	8	x	3	8	x	3	2	-	G	1				
FAMILY					STEP 1								STEP 2						
LOCATION					GRADE				MANUFACTURER				PATTERN				COLOR		

## STEP 6: CONFIGURE DESCRIPTION

### FILL IN YOUR DESCRIPTION

#### 1. SIDE

1. Side				
LOCATION	GRADE	MANUFACTURER	PATTERN	COLOR

#### 2. STEP 1

2. Step 1				
LOCATION	GRADE	MANUFACTURER	PATTERN	COLOR

#### 3. STEP 2

3. Step 2				
LOCATION	GRADE	MANUFACTURER	PATTERN	COLOR

#### 4. STEP 3

4. Step 3				
LOCATION	GRADE	MANUFACTURER	PATTERN	COLOR

STEP 3

#### FOOT

1"-Nylon Glide
NAME/COLOR

#### EMBROIDERY\*

Seat	Rocket Logo
LOCATION	NAME

#### FIRE RETARDANCY\*

CAL TB-133
------------

### EXAMPLE DESCRIPTION

#### 1. SIDE

1. Side	1	Spradling	Silvertex	Sage
LOCATION	GRADE	MANUFACTURER	PATTERN	COLOR

#### 2. STEP - 1

2. Step 1	3	Momentum	Tribeca	Fossil
LOCATION	GRADE	MANUFACTURER	PATTERN	COLOR

#### 3. STEP - 2

3. Step 2	3	Momentum	Tribeca	Fossil
LOCATION	GRADE	MANUFACTURER	PATTERN	COLOR

#### 4. STEP - 3

4. Step 3	3	Momentum	Tribeca	Fossil
LOCATION	GRADE	MANUFACTURER	PATTERN	COLOR

#### FOOT

1"-Nylon Glide
NAME/COLOR

#### EMBROIDERY\*

Seat	Rocket Logo
LOCATION	NAME

#### FIRE RETARDANCY\*

CAL TB-133
------------

\*Optional add-ons. Reference product breakdown for availability.

INCLUDE ON PURCHASE ORDER

## EXAMPLE CONFIGURATION

F156-38x38x32-G1

1. Side: Grade 1, Spradling, Silvertex, Sage | 2. Step 1: Grade 3, Momentum, Tribeca, Fossil |  
 3. Step 2: Grade 3, Momentum, Tribeca, Fossil | 4. Step 3: Grade 3, Momentum, Tribeca, Fossil |  
 Foot: 1" Nylon Glide | Embroidery: Seat, Rocket logo | CAL TB-133

## PRODUCT BREAKDOWN

### BUBBLE THREE STEP (F156)

Product No.	Dimen./Weight (L x W x H)	FOOT AND FINISH OPTIONS												INTEGRATED POWER OPTIONS						HPL	Emb.	
		Zip Z	Standard G1 L1		3" Premium R3 C3		6" Premium S16 S29 C6 T6 R6 M6				Standard G1 L1		3" Premium R3 C3		6" Premium S16 S29 C6 T6 R6 M6							
F156-38x38x32	38" x 38" x 32" 53 lbs.	-	✓	✓	-	-	-	-	-	-	-	-	-	-	-	-	-	-	-	-	-	✓

**Fōmcore**  
SERVE. CREATE. INSPIRE.

1770 E. Keating Ave - Muskegon, MI 49442 • Tel: 231.366.4791 • [www.fomcore.com](http://www.fomcore.com)

ADDITIONAL  
RESOURCES



CLICK TO VIEW »