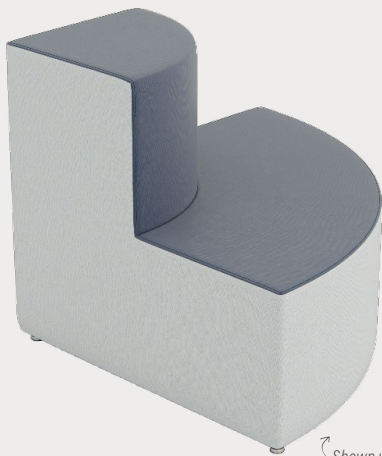


STEP SERIES

TWO STEP CURVED OUTSIDE CORNER

Product No. F088

The Two Step Curved Outside Corner is designed with a smoothly curved back, making it ideal for fluid, collaborative seating arrangements. Whether used alone or as part of a larger configuration, this piece offers versatile seating options that inspire creativity. The flat steps provide stable support, while the curved back adds a dynamic, modern touch. When combined with other pieces from our Step Series, this is the perfect addition to student-centered spaces like commons areas, media centers, the spaces in between, and more.



Shown with 1" Nylon Glides

DETAILS

CONSTRUCTION

- Solid foam construction
- Wood base to fit foot options
- Reinforced seams and stitching
- Made in USA
- Backed with a lifetime warranty

MODIFICATION

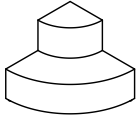
- Textile and placement
- Foot and Finish options
- Stitching color
- Embroidery

QUICK COMBOS

IDEA STARTERS COMING SOON

HOW TO SPECIFY F088

STEP 1: HEIGHT

DIMENSION (L x W)	HEIGHT	STEP HEIGHT
 38" x 38"	32"	16.5"

STEP 2: FOOT

1" STANDARD FOOT OPTIONS

-  Nylon Glide (G1)
-  Felt Glide (G1)
-  1" Low Profile Leg (L1)
Black

*Reference the product breakdown on back for availability.

STEP 3: GRADE AND TEXTILE

GRADES & SWATCHES



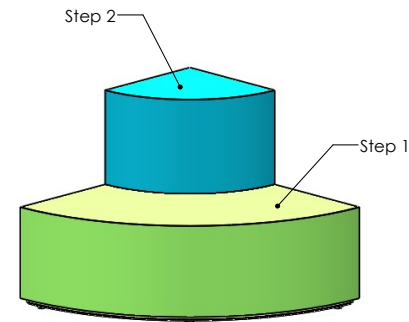
[CLICK TO VIEW »](#)

FABRIC DIRECTON & COLOR GUIDE



[CLICK TO VIEW »](#)

COLOR GUIDE



*Thread will default to match the seat textile.

STEP 4: MODIFICATIONS (OPTIONAL)

EMBROIDERY

- Personalize your furniture with embroidery!
- We can embroider up to 12" x 15" artwork

FLAME RETARDANT

- CAL TB-133
- Optional flame retardant add on.

EMBROIDERY SPECS

[CLICK TO VIEW »](#)



*Reference the product breakdown on back for availability.

STEP 5: CONFIGURE PART NUMBER

FILL IN YOUR PART NUMBER

F	0	8	8	-	3	8	x	3	8	x	3	2	-			
FAMILY					STEP 1								STEP 2			
L					W				H				FOOT			

EXAMPLE PART NUMBER

F	0	8	8	-	3	8	x	3	8	x	3	2	-	G	1	
FAMILY					STEP 1								STEP 2			
L					W				H				FOOT			

STEP 6: CONFIGURE DESCRIPTION

FILL IN YOUR DESCRIPTION

1. SIDES

1. Sides					
LOCATION	GRADE	MANUFACTURER	PATTERN	COLOR	

2. STEP-1

2. Step 1					
LOCATION	GRADE	MANUFACTURER	PATTERN	COLOR	

3. STEP-2

3. Step 2					
LOCATION	GRADE	MANUFACTURER	PATTERN	COLOR	

STEP 3

FOOT

1" Nylon Glide
NAME/COLOR

EMBROIDERY*

Seat	Rocket Logo
LOCATION	NAME

FIRE RETARDANCY*

CAL TB-133

EXAMPLE DESCRIPTION

1. SIDES

1. Sides	1	Spradling	Silvertex	Sage
LOCATION	GRADE	MANUFACTURER	PATTERN	COLOR

2. STEP-1

2. Step 1	3	Momentum	Tribeca	Fossil
LOCATION	GRADE	MANUFACTURER	PATTERN	COLOR

3. STEP-2

3. Step 2	3	Momentum	Tribeca	Fossil
LOCATION	GRADE	MANUFACTURER	PATTERN	COLOR

FOOT

1" Nylon Glide
NAME/COLOR

EMBROIDERY*

Seat	Rocket Logo
LOCATION	NAME

FIRE RETARDANCY*

CAL TB-133

*Optional add-ons. Reference product breakdown for availability.

INCLUDE ON PURCHASE ORDER

EXAMPLE CONFIGURATION

F088-38x38x32-G1

1. Sides: Grade 1, Spradling, Silvertex, Sage | 2. Step -1: Grade 3, Momentum, Tribeca, Fossil |

3. Step-2: Grade 3, Momentum, Tribeca, Fossil |

Foot: 1" Nylon Glide | Embroidery: Seat, Rocket logo | CAL TB-133

PRODUCT BREAKDOWN

TWO STEP CURVED OUTSIDE CORNER

Product No.	Dimen./Weight (L x W x H)	FOOT AND FINISH OPTIONS												INTEGRATED POWER OPTIONS						HPL	Emb.				
		Zip Z	Standard		3" Premium		6" Premium						Standard		3" Premium		6" Premium								
			G1	L1	R3	C3	S16	S29	C6	T6	R6	M6	G1	L1	R3	C3	S16	S29	C6			T6	R6	M6	
F088-38x38x32	38" x 38" x 32" 41.5 lbs.	-	✓	✓	-	-	-	-	-	-	-	-	-	-	-	-	-	-	-	-	-	-	-	-	✓



1770 E. Keating Ave - Muskegon, MI 49442 • Tel: 231.366.4791 • www.fomcore.com

ADDITIONAL RESOURCES



CLICK TO VIEW »