

NETWORK SERIES 2.0

# BOOMERANG SOFA 2.0

Product No. F046

With our light-weight, solid foam construction, you can maneuver the Boomerang Sofa 2.0 into endless combinations. Meetings, gatherings, and even quick chats will flourish in your purposefully curated spaces. Showcasing the variety of geometry from the Boomerang Sofa 2.0, your creativity has no bounds to craft the proper environment for any situation.



## DETAILS

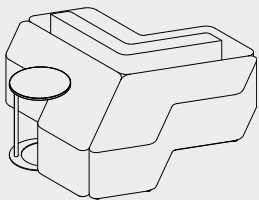
### CONSTRUCTION

- Solid foam construction
- Wood base to fit foot options
- Reinforced seams and stitching
- Made in USA
- Backed with a lifetime warranty

### MODIFICATION

- Textile and placement
- Foot and finish options
- Stitching color
- Power options
- Embroidery

## QUICK COMBOS




F045, F046, FA001

## IDEA STARTERS COMING SOON



# HOW TO SPECIFY F046

## STEP 1: SEAT HEIGHT

| DIMENSION (L x W)   | HEIGHT | SEAT HEIGHT |
|---|--------|-------------|
| <br>68" x 18" | 23"    | 16"         |
|   | 25"    | 18"         |

## STEP 2: FOOT

### 1" STANDARD FOOT OPTIONS

-  Nylon Glide (G1)
-  Felt Glide (G1)
- 1" Low Profile Leg (L1)  
Black
- 3" Caster (C3)

### 6" PREMIUM FOOT OPTIONS

- 6" Mod Leg (M6)
- 6" Caster (C6)

*\*Reference the product breakdown on back for availability.*

## STEP 3: GRADE AND TEXTILE

### GRADES & SWATCHES



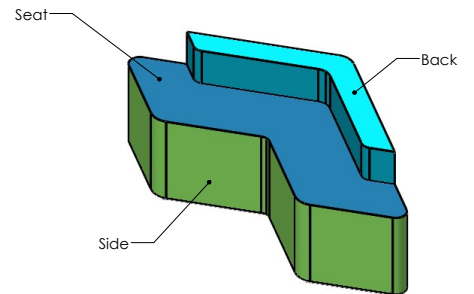
[CLICK TO VIEW »](#)

### FABRIC DIRECTION & COLOR GUIDE





[CLICK TO VIEW »](#)

### COLOR GUIDE



## STEP 4: MODIFICATIONS (OPTIONAL)

### INTEGRATED POWER OPTIONS\* (PI, PI+)

-  White
  -  Silver
- PI = 1 Power Unit  
PI+ = 2 Power Units

### EMBROIDERY

- Personalize your furniture with embroidery!
- We can embroider up to 12" x 15" artwork.

### EMBROIDERY SPECS

[CLICK TO VIEW »](#)



### FLAME RETARDANT

- CAL TB-133
- Optional flame retardant add on.

*\*Reference the product breakdown on back for availability.*

## STEP 5: CONFIGURE PART NUMBER

### FILL IN YOUR PART NUMBER

|        |   |   |   |   |        |   |   |   |   |        |  |      |  |                    |  |       |  |  |  |
|--------|---|---|---|---|--------|---|---|---|---|--------|--|------|--|--------------------|--|-------|--|--|--|
| F      | 0 | 4 | 6 | - | x      | x | x | x | - |        |  |      |  | -                  |  |       |  |  |  |
| FAMILY |   |   |   |   | STEP 1 |   |   |   |   | STEP 2 |  |      |  | STEP 4* (OPTIONAL) |  |       |  |  |  |
| L      |   |   |   | W |        |   |   | H |   |        |  | FOOT |  |                    |  | POWER |  |  |  |

### EXAMPLE PART NUMBER

|        |   |   |   |   |   |   |   |   |   |   |   |   |   |   |   |   |      |   |  |  |       |  |  |  |
|--------|---|---|---|---|---|---|---|---|---|---|---|---|---|---|---|---|------|---|--|--|-------|--|--|--|
| F      | 0 | 4 | 6 | - | 6 | 8 | x | 1 | 8 | x | 2 | 5 | - | M | 6 | - | P    | 1 |  |  |       |  |  |  |
| FAMILY |   |   |   |   | L |   |   |   | W |   |   |   | H |   |   |   | FOOT |   |  |  | POWER |  |  |  |

## STEP 6: CONFIGURE DESCRIPTION

### FILL IN YOUR DESCRIPTION

#### 1. SEAT

|          |       |              |         |       |  |
|----------|-------|--------------|---------|-------|--|
| 1. Side  |       |              |         |       |  |
| LOCATION | GRADE | MANUFACTURER | PATTERN | COLOR |  |

#### 2. SIDE

|          |       |              |         |       |  |
|----------|-------|--------------|---------|-------|--|
| 2. Seat  |       |              |         |       |  |
| LOCATION | GRADE | MANUFACTURER | PATTERN | COLOR |  |

#### 3. BACK

|          |       |              |         |       |  |
|----------|-------|--------------|---------|-------|--|
| 3. Back  |       |              |         |       |  |
| LOCATION | GRADE | MANUFACTURER | PATTERN | COLOR |  |

#### FOOT

|            |
|------------|
| NAME/COLOR |
|------------|

#### POWER\*

|       |          |
|-------|----------|
| COLOR | QUANTITY |
|-------|----------|

#### EMBROIDERY\*

|          |      |
|----------|------|
| LOCATION | NAME |
|----------|------|

#### FIRE RETARDANCY\*

|  |
|--|
|  |
|--|

STEP 3

### EXAMPLE DESCRIPTION

#### 1. SEAT

|          |       |              |           |       |
|----------|-------|--------------|-----------|-------|
| 1. Side  | 1     | Spradling    | Silvertex | Sage  |
| LOCATION | GRADE | MANUFACTURER | PATTERN   | COLOR |

#### 2. SIDE

|          |       |              |         |        |
|----------|-------|--------------|---------|--------|
| 2. Side  | 3     | Momentum     | Tribeca | Fossil |
| LOCATION | GRADE | MANUFACTURER | PATTERN | COLOR  |

#### 3. BACK

|          |       |              |         |        |
|----------|-------|--------------|---------|--------|
| 3. Back  | 3     | Momentum     | Tribeca | Fossil |
| LOCATION | GRADE | MANUFACTURER | PATTERN | COLOR  |

#### FOOT

|            |  |  |  |  |
|------------|--|--|--|--|
| 6" Mod Leg |  |  |  |  |
| NAME/COLOR |  |  |  |  |

#### POWER\*

|       |          |
|-------|----------|
| White | 1        |
| COLOR | QUANTITY |

#### EMBROIDERY\*

|          |             |
|----------|-------------|
| Seat     | Rocket Logo |
| LOCATION | NAME        |

#### FIRE RETARDANCY\*

|            |
|------------|
| CAL TB-133 |
|------------|

\*Optional add-ons. Reference product breakdown for availability.

INCLUDE ON PURCHASE ORDER

## EXAMPLE CONFIGURATION

F046-68x18x25-M6-PI

1. Seat: Grade 1, Spradling, Silvertex, Sage | 2. Side: Grade 3, Momentum, Tribeca, Fossil | 3. Back: Grade 3, Momentum, Tribeca, Fossil

Foot: 6" Mod Leg | Power: White, Quantity: 1 | Embroidery: Seat, Rocket logo | CAL TB-133

## PRODUCT BREAKDOWN

### BOOMERANG SOFA 2.0 (F046)

| Product No.   | Dimen./Weight<br>(L x W x H)                    | Zip<br>Z | FOOT AND FINISH OPTIONS |    |            |    |            |     |    |    |    |    | INTEGRATED POWER OPTIONS |    |            |    |            |     |    |    |    |    | HPL | Emb. |   |   |
|---------------|---|----------|-------------------------|----|------------|----|------------|-----|----|----|----|----|--------------------------|----|------------|----|------------|-----|----|----|----|----|-----|------|---|---|
|               |   |          | Standard                |    | 3" Premium |    | 6" Premium |     |    |    |    |    | Standard                 |    | 3" Premium |    | 6" Premium |     |    |    |    |    |     |      |   |   |
|               |   |          | G1                      | L1 | R3         | C3 | S16        | S29 | C6 | T6 | R6 | M6 | G1                       | L1 | R3         | C3 | S16        | S29 | C6 | T6 | R6 | M6 |     |      |   |   |
| F046-68x18x23 | 68" x 18" x 23"<br>34 lbs.<br>(16" Seat Height) | -        | ✓                       | ✓  | -          | ✓  | -          | -   | ✓  | -  | -  | ✓  | ✓                        | ✓  | -          | ✓  | -          | -   | -  | -  | -  | -  | -   | -    | - | ✓ |
| F046-68x18x25 | 68" x 18" x 25"<br>36 lbs.<br>(18" Seat Height) | -        | ✓                       | ✓  | -          | ✓  | -          | -   | ✓  | -  | -  | ✓  | ✓                        | ✓  | -          | ✓  | -          | -   | ✓  | -  | -  | ✓  | -   | -    | ✓ | ✓ |

**Fōmcore**  
SERVE. CREATE. INSPIRE.

1770 E. Keating Ave - Muskegon, MI 49442 • Tel: 231.366.4791 • [www.fomcore.com](http://www.fomcore.com)

ADDITIONAL  
RESOURCES



CLICK TO VIEW »