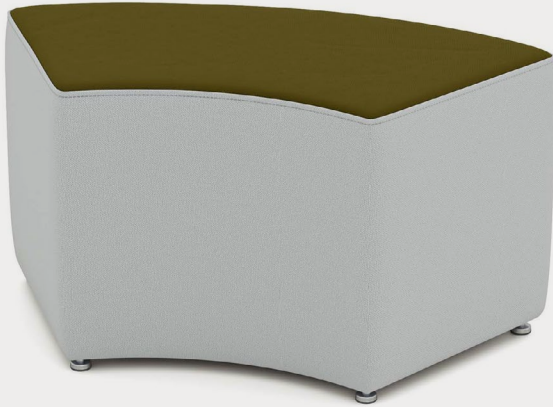


OTTOMAN & BENCH SERIES

ARC BENCH

Product No. F015

This elegant Arc Bench 60 makes for a great accent piece. It goes beyond mere comfort and functionality thanks to its unique design. Use it for lobbies, waiting areas, lounges and just about any gathering space. Display it as a set for a curve or wave effect of use it as a standalone seat.



Shown with 1" Nylon Glides

DETAILS

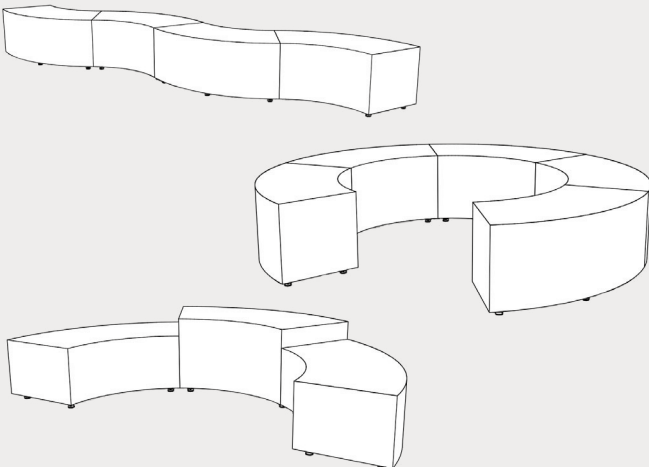
CONSTRUCTION

- Solid foam construction
- Wood base to fit foot options
- Reinforced seams and stitching
- Made in USA
- Backed with a lifetime warranty

MODIFICATION

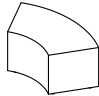
- Seat height
- Textile and placement
- Foot and finish options
- Fully zippered (no wood base)
- Stitching and zipper colors
- Embroidery
- Power options

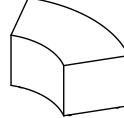
QUICK COMBOS



HOW TO SPECIFY F015

STEP 1: SEAT HEIGHT

| DIMENSION (L x W) | SEAT HEIGHT |
|---|-------------|
|  38" x 18" | 14" |
| | 16" |
| | 18" |

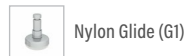
| DIMENSION (L x W) | SEAT HEIGHT |
|--|-------------|
|  44" x 18" | 14" |
| | 16" |
| | 18" |

STEP 2: FOOT AND FULLY ZIPPERED

FULLY ZIPPERED



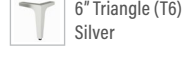
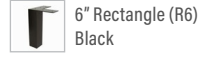
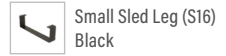
1" STANDARD FOOT OPTIONS



3" PREMIUM FOOT OPTIONS



6" PREMIUM FOOT OPTIONS



**Reference the product breakdown on back for availability.*

STEP 3: GRADE AND TEXTILE

GRADES & SWATCHES



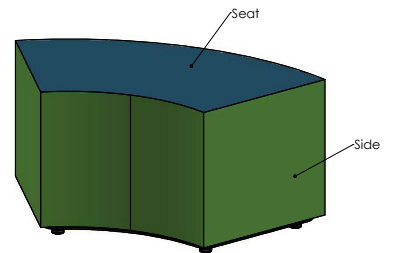
[CLICK TO VIEW »](#)

FABRIC DIRECTION & COLOR GUIDE



[CLICK TO VIEW »](#)

COLOR GUIDE



**Thread will default to match the seat textile.*

STEP 4: MODIFICATIONS (OPTIONAL)

INTEGRATED POWER OPTIONS* (PI, PI+)



White



Silver

PI = 1 Power Unit

PI+ = 2 Power Units

EMBROIDERY

- Personalize your furniture with embroidery!
- We can embroider up to 12" x 15" artwork

FLAME RETARDANT

- CAL TB-133
- Optional flame retardant add on.

EMBROIDERY SPECS

[CLICK TO VIEW »](#)



**Reference the product breakdown on back for availability.*

STEP 5: CONFIGURE PART NUMBER

FILL IN YOUR PART NUMBER

| | | | | | | | | | | | | | | | | | | | |
|--------|---|---|---|---|--------|---|---|---|---|--------|--|----------|--|--------------------|--|-------|--|--|--|
| F | 0 | 1 | 5 | - | x | x | x | x | - | | | | | - | | | | | |
| FAMILY | | | | | STEP 1 | | | | | STEP 2 | | | | STEP 4* (OPTIONAL) | | | | | |
| L | | | | W | | | | H | | | | FOOT/ZIP | | | | POWER | | | |

EXAMPLE PART NUMBER

| | | | | | | | | | | | | | | | | | | | | | | | | |
|--------|---|---|---|---|---|---|---|---|---|---|---|---|---|---|---|---|----------|---|--|--|-------|--|--|--|
| F | 0 | 1 | 5 | - | 3 | 8 | x | 1 | 8 | x | 1 | 4 | - | G | 1 | - | P | 1 | | | | | | |
| FAMILY | | | | | L | | | | W | | | | H | | | | FOOT/ZIP | | | | POWER | | | |

STEP 6: CONFIGURE DESCRIPTION

FILL IN YOUR DESCRIPTION

1. SEAT

| | | | | | |
|----------|-------|--------------|---------|-------|--|
| 1. Seat | | | | | |
| LOCATION | GRADE | MANUFACTURER | PATTERN | COLOR | |

2. SIDE

| | | | | | |
|----------|-------|--------------|---------|-------|--|
| 2. Side | | | | | |
| LOCATION | GRADE | MANUFACTURER | PATTERN | COLOR | |

FOOT

| |
|------------|
| NAME/COLOR |
|------------|

POWER*

| | |
|-------|----------|
| COLOR | QUANTITY |
|-------|----------|

EMBROIDERY*

| | |
|----------|------|
| LOCATION | NAME |
|----------|------|

FIRE RETARDANCY*

| |
|--|
| |
|--|

EXAMPLE DESCRIPTION

1. SEAT

| | | | | |
|----------|-------|--------------|-----------|-------|
| 1. Seat | 1 | Spradling | Silvertex | Sage |
| LOCATION | GRADE | MANUFACTURER | PATTERN | COLOR |

2. SIDE

| | | | | |
|----------|-------|--------------|---------|--------|
| 2. Side | 3 | Momentum | Tribeca | Fossil |
| LOCATION | GRADE | MANUFACTURER | PATTERN | COLOR |

FOOT

| | | |
|----------------|-------|----------|
| 1" Nylon Glide | White | 1 |
| NAME/COLOR | COLOR | QUANTITY |

EMBROIDERY*

| | |
|----------|-------------|
| Seat | Rocket Logo |
| LOCATION | NAME |

FIRE RETARDANCY*

| |
|------------|
| CAL TB-133 |
|------------|

*Optional add-ons. Reference product breakdown for availability.

INCLUDE ON PURCHASE ORDER

EXAMPLE CONFIGURATION

F015-38x18x14-G1-PI

1. Seat: Grade 1, Spradling, Silvertex, Sage | 2. Side: Grade 3, Momentum, Tribeca, Fossil

Foot: 1" Nylon Glide | Power: White, Quantity: 1 | Embroidery: Seat, Rocket logo | CAL TB-133

PRODUCT BREAKDOWN

ARC BENCH (F015)

| Product No. | Dimen./Weight (L x W x H) | FOOT AND FINISH OPTIONS | | | | | | | | | | | | INTEGRATED POWER OPTIONS | | | | | | | | | | | | HPL | Emb. |
|---------------|------------------------------|-------------------------|----------------|----|------------------|----|-----|-----|------------------|----|----|----|----------------|--------------------------|------------------|----|-----|-----|------------------|----|----|----|---|---|---|-----|------|
| | | Zip Z | Standard G1 | LI | 3" Premium R3 | C3 | S16 | S29 | 6" Premium C6 | T6 | R6 | M6 | Standard G1 | LI | 3" Premium R3 | C3 | S16 | S29 | 6" Premium C6 | T6 | R6 | M6 | | | | | |
| F015-38x18x14 | 38" x 18" x 14" 14 lbs. | ✓ | ✓ | ✓ | ✓ | ✓ | ✓ | - | - | ✓ | ✓ | ✓ | - | - | - | - | - | - | - | - | - | - | - | - | - | ✓ | |
| F015-38x18x16 | 38" x 18" x 16" 16 lbs. | ✓ | ✓ | ✓ | ✓ | ✓ | ✓ | - | - | ✓ | ✓ | ✓ | - | - | - | - | - | - | - | - | - | - | - | - | - | ✓ | |
| F015-38x18x18 | 38" x 18" x 18" 17 lbs. | ✓ | ✓ | ✓ | ✓ | ✓ | ✓ | - | - | ✓ | ✓ | ✓ | ✓ | ✓ | - | - | - | - | - | - | - | - | - | - | - | ✓ | |
| F015-44x18x14 | 44" x 18" x 14" 17 lbs. | ✓ | ✓ | ✓ | ✓ | ✓ | ✓ | - | - | ✓ | ✓ | ✓ | - | - | - | - | - | - | - | - | - | - | - | - | ✓ | | |
| F015-44x18x16 | 44" x 18" x 16" 19 lbs. | ✓ | ✓ | ✓ | ✓ | ✓ | ✓ | - | - | ✓ | ✓ | ✓ | - | - | - | - | - | - | - | - | - | - | - | - | ✓ | | |
| F015-44x18x18 | 44" x 18" x 18" 20 lbs. | ✓ | ✓ | ✓ | ✓ | ✓ | ✓ | - | - | ✓ | ✓ | ✓ | ✓ | ✓ | - | - | - | - | - | - | - | - | - | - | ✓ | | |



ADDITIONAL RESOURCES



CLICK TO VIEW »