

# OTTOMAN & BENCH SERIES AMOEBIA BENCH

Product No. F006

With its organic, fun and creative shape, the Amoeba is a perfect piece to inspire in media centers or in the classroom. Pull up a few ROK Ottomans and turn this Amoeba into a collaborative active seating space where students can share ideas and explore their creativity. Add more Amoebas to your space to create break-out pods that allow students smaller group interaction. However you utilize the Amoeba it will be sure to bring fun and collaboration to your learning environment.



## DETAILS

### CONSTRUCTION

- Solid foam construction
- Reinforced seams and stitching
- Wood base to fit foot options
- Made in USA
- Backed with a lifetime warranty

### MODIFICATION

- Seat height
- Textile and placement
- Foot and finish options
- Stitching color
- HPL work surface
- Embroidery

## QUICK COMBOS

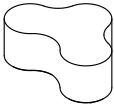


F006, F005

**Fōmcore**  
SERVE. CREATE. INSPIRE.

# HOW TO SPECIFY F006

## STEP 1: SEAT HEIGHT

DIMENSION (L x W)	SEAT HEIGHT
 48" x 33.5"	14"
	16"
	18"
	20"

## STEP 2: FOOT

### 1" STANDARD FOOT OPTIONS

-  Nylon Glide (G1)
-  Felt Glide (G1)
- 1" Low Profile Leg (L1)  
Black

### 6" PREMIUM FOOT OPTIONS

- 6" Mod Leg (M6)
- 6" Rectangle (R6)  
Black
- 6" Rectangle (R6)  
Silver
- 6" Triangle (T6)  
Black
- 6" Triangle (T6)  
Silver
- 6" Caster (C6)

### 3" PREMIUM FOOT OPTIONS

- 3" Rectangle (R3)  
Black
- 3" Rectangle (R3)  
Silver
- 3" Caster (C3)

\*Reference the product breakdown on back for availability.

## STEP 3: GRADE AND TEXTILE

### GRADES & SWATCHES



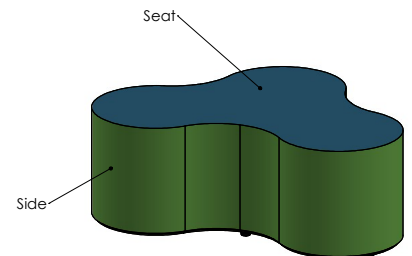
[CLICK TO VIEW »](#)

### FABRIC DIRECTION & COLOR GUIDE



[CLICK TO VIEW »](#)

### COLOR GUIDE



\*Thread will default to match the seat textile.

## STEP 4: MODIFICATIONS (OPTIONAL)

### HPL WORKSURFACE (HPL)

 **Black Matte**  
**Black Gloss - Writable Surface**

EDGE-BANDING OPTIONS




-  Black Matte/Gloss
-  Spectrum Red
-  Chrome Yellow
-  Orange Grove
-  Spectrum Blue

 **Gull Grey**  
w/ matching edgebanding

 **Chelsea Maple**  
w/ matching edgebanding

 **Dover White Matte**  
**Dover White Gloss - Writable Surface**

EDGE-BANDING OPTIONS

-  White Matte/Gloss
-  Black Matte/Gloss
-  Spectrum Red
-  Chrome Yellow
-  Orange Grove
-  Spectrum Blue
-  Navy Blue

 **Black Riftwood**  
w/ matching edgebanding

 **White Twill**  
w/ matching edgebanding

## STEP 4 (CONT.): MODIFICATIONS (OPTIONAL)

### EMBROIDERY

- Personalize your furniture with embroidery!
- We can embroider logos up to 12" x 15".

### EMBROIDERY SPECS

[CLICK TO VIEW »](#)



### FLAME RETARDANT

- CAL TB-133
- Optional flame retardant add on.

\*Reference the product breakdown for availability.

## STEP 5: CONFIGURE PART NUMBER

### FILL IN YOUR PART NUMBER

F	0	0	6	-	L	x	W	x	H	-	FOOT	-	HPL
FAMILY					STEP 1				STEP 2		STEP 4* (OPTIONAL)		

### EXAMPLE PART NUMBER

F	0	0	6	-	4	8	x	3	3	.5	x	1	8	-	R	6	-	H	P	L
FAMILY					L				W		H		FOOT		HPL					

## STEP 6: CONFIGURE DESCRIPTION

### FILL IN YOUR DESCRIPTION

#### 1. SEAT

1. Seat	GRADE	MANUFACTURER	PATTERN	COLOR
---------	-------	--------------	---------	-------

#### 2. SIDE

2. Side	GRADE	MANUFACTURER	PATTERN	COLOR
---------	-------	--------------	---------	-------

#### FOOT

NAME/COLOR
------------

#### FIRE RETARDANCY\*

--

#### HPL WORKSURFACE\*

HPL COLOR	EDGE BANDING COLOR
-----------	--------------------

#### EMBROIDERY\*

LOCATION	NAME
----------	------

STEP 3

### EXAMPLE DESCRIPTION

#### 1. SEAT

1. Seat	1	Spradling	Silvertex	Neutra
LOCATION	GRADE	MANUFACTURER	PATTERN	COLOR

#### 2. SIDE

2. Side	3	Momentum	Tribeca	Slate
LOCATION	GRADE	MANUFACTURER	PATTERN	COLOR

#### FOOT

6" Rectangle Leg - Black
NAME/COLOR

#### FIRE RETARDANCY\*

CAL TB-133
------------

#### HPL WORKSURFACE\*

Black Matte	Spectrum Red
HPL COLOR	EDGE BANDING COLOR

#### EMBROIDERY\*

Seat	Rocket Logo
LOCATION	NAME

\*Optional add-ons. Reference product breakdown for availability.

INCLUDE ON PURCHASE ORDER

## EXAMPLE CONFIGURATION

F006-48x33.5x18-R6-HPL

1. Seat: Grade 1, Spradling, Silvertex, Sage | 2. Side: Grade 3, Momentum, Tribeca, Fossil

Foot: 6" Rectangle Leg Black | HPL Worksurface: Black Matte, Edgebanding: Spectrum Red | Embroidery: Seat, Rocket logo | CAL TB-133

## PRODUCT BREAKDOWN

### AMOEBIA BENCH (F006)

Product No.	Dimen./Weight (L x W x H)	Zip Z	FOOT AND FINISH OPTIONS												INTEGRATED POWER OPTIONS						HPL	Emb.			
			Standard		3" Premium		6" Premium						Standard		3" Premium		6" Premium								
			G1	L1	R3	C3	S16	S29	C6	T6	R6	M6	G1	L1	R3	C3	S16	S29	C6	T6	R6	M6			
F006-48x33.5x14	48" x 33.5" x 14" 27 lbs.	-	✓	✓	✓	✓	-	-	✓	✓	✓	✓	-	-	-	-	-	-	-	-	-	-	-	✓	✓
F006-48x33.5x16	48" x 33.5" x 16" 29 lbs.	-	✓	✓	✓	✓	-	-	✓	✓	✓	✓	-	-	-	-	-	-	-	-	-	-	-	✓	✓
F006-48x33.5x18	48" x 33.5" x 18" 30 lbs.	-	✓	✓	✓	✓	-	-	✓	✓	✓	✓	-	-	-	-	-	-	-	-	-	-	-	✓	✓
F006-48x33.5x20	48" x 33.5" x 20" 31 lbs.	-	✓	✓	✓	✓	-	-	✓	✓	✓	✓	-	-	-	-	-	-	-	-	-	-	-	✓	✓

**Fomcore**  
SERVE. CREATE. INSPIRE.

1770 E. Keating Ave - Muskegon, MI 49442 • Tel: 231.366.4791 • [www.fomcore.com](http://www.fomcore.com)

### ADDITIONAL RESOURCES



[CLICK TO VIEW »](#)