

OTTOMAN & BENCH SERIES CRESCENT OTTOMAN

Product No. F003

The crescent shape of this ottoman is a conversation starter. If you're looking for a simple way to add extra seating and character to a room without sacrificing design, this is a piece you can't ignore. Relax into it as a footstool or a seat.



Shown with 1" Nylon Glides

DETAILS

CONSTRUCTION

- Solid foam construction
- Reinforced seams and stitching
- Wood base to fit foot options
- Made in USA
- Backed with a lifetime warranty

MODIFICATION

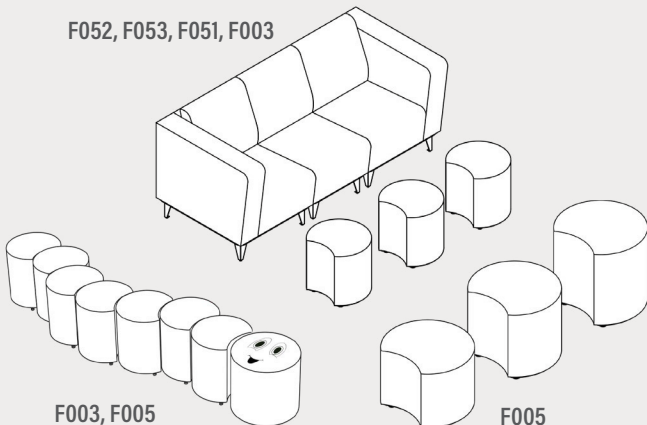
- Seat height
- Textile and placement
- Foot and finish options
- Fully zippered (no wood base)
- Stitching and zipper colors
- HPL work surface
- Embroidery

WEATHER RESISTANT
See series page for more details. »



QUICK COMBOS

F052, F053, F051, F003



Fōmcore
SERVE. CREATE. INSPIRE.

HOW TO SPECIFY F003

STEP 1: SEAT HEIGHT

DIMENSION (DIA)	SEAT HEIGHT
18"	12"
	14"
	16"
	18"
	20"

STEP 2: FOOT AND FULLY ZIPPERED

FULLY ZIPPERED



Fully Zippered (Z)

1" STANDARD FOOT OPTIONS



Nylon Glide (G1)



Felt Glide (G1)



1" Low Profile Leg (L1)
Black

3" PREMIUM FOOT OPTIONS



3" Rectangle (R3)
Black



3" Rectangle (R3)
Silver

6" PREMIUM FOOT OPTIONS



6" Mod Leg (M6)



6" Rectangle (R6)
Black



6" Rectangle (R6)
Silver

*Reference the product breakdown on back for availability.

STEP 3: GRADE AND TEXTILE

GRADES & SWATCHES



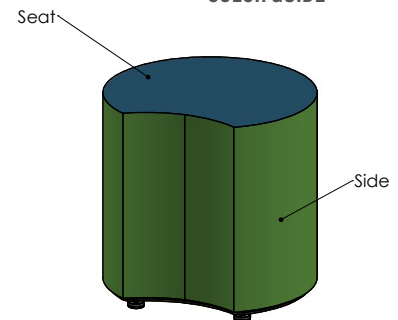
CLICK TO VIEW »

FABRIC DIRECTION & COLOR GUIDE



CLICK TO VIEW »

COLOR GUIDE



*Thread will default to match the seat textile.

STEP 4: MODIFICATIONS (OPTIONAL)

HPL WORKSURFACE (HPL)

Black Matte
Black Gloss - Writable Surface

EDGE-BANDING OPTIONS

Black Matte/Gloss Chrome Yellow Spectrum Blue
Spectrum Red Orange Grove

Dover White Matte
Dover White Gloss - Writable Surface

EDGE-BANDING OPTIONS

White Matte/Gloss Chrome Yellow Spectrum Blue
Black Matte/Gloss Orange Grove Navy Blue
Spectrum Red

Gull Grey
w/ matching edgebanding

Chelsea Maple
w/ matching edgebanding

Black Riftwood
w/ matching edgebanding

White Twill
w/ matching edgebanding

STEP 4 (CONT.): MODIFICATIONS (OPTIONAL)

EMBROIDERY

- Personalize your furniture with embroidery!
- We can embroider logos up to 12" x 15".

EMBROIDERY SPECS

[CLICK TO VIEW »](#)



FLAME RETARDANT

- CAL TB-133
- Optional flame retardant add on.

*Reference the product breakdown for availability.

STEP 5: CONFIGURE PART NUMBER

FILL IN YOUR PART NUMBER

F	0	0	3	-		x		-				-				H	P	L
FAMILY					DIA				H				FOOT/ZIP			HPL		
					STEP 1				STEP 2			STEP 4* (OPTIONAL)						

EXAMPLE PART NUMBER

F	0	0	3	-	1	8	x	1	8	-	R	6	-	H	P	L	
FAMILY					DIA				H			FOOT/ZIP			HPL		

STEP 6: CONFIGURE DESCRIPTION

FILL IN YOUR DESCRIPTION

1. SEAT

1. Seat					
LOCATION	GRADE	MANUFACTURER	PATTERN	COLOR	

2. SIDE

2. Side					
LOCATION	GRADE	MANUFACTURER	PATTERN	COLOR	

FOOT

NAME/COLOR

FIRE RETARDANCY*

--

HPL WORKSURFACE*

HPL COLOR	EDGE BANDING COLOR
-----------	--------------------

EMBROIDERY*

LOCATION	NAME
----------	------

STEP 3

EXAMPLE DESCRIPTION

1. SEAT

1. Seat	1	Spradling	Silvertex	Sage
LOCATION	GRADE	MANUFACTURER	PATTERN	COLOR

2. SIDE

2. Side	3	Momentum	Tribeca	Fossil
LOCATION	GRADE	MANUFACTURER	PATTERN	COLOR

FOOT

6" Rectangle Leg - Black
NAME/COLOR

FIRE RETARDANCY*

CAL TB-133

HPL WORKSURFACE*

Black Matte	Spectrum Red
HPL COLOR	EDGE BANDING COLOR

EMBROIDERY*

Seat	Rocket Logo
LOCATION	NAME

*Optional add-ons. Reference product breakdown for availability.

INCLUDE ON PURCHASE ORDER

EXAMPLE CONFIGURATION

F003-18x18-R6-HPL

1. Seat: Grade 1, Spradling, Silvertex, Sage | 2. Side: Grade 3, Momentum, Tribeca, Fossil

Foot: 6" Rectangle Leg Black | HPL Worksurface: Black Matte, Edgebanding: Spectrum Red | Embroidery: Seat, Rocket logo | CAL TB-133

PRODUCT BREAKDOWN

CRESCENT OTTOMAN (F003)

Product No.	Dimen./Weight (L x W x H)	FOOT OPTIONS											INTEGRATED POWER OPTION										HPL	Emb.
		Zip Z	Standard		3" Premium		6" Premium				Standard		3" Premium		6" Premium									
			GI	LI	R3	C3	S16	S29	C6	T6	R6	M6	GI	LI	R3	C3	S16	S29	C6	T6	R6	M6		
F003-18x12	18" x 12" 7 lbs.	✓	✓	✓	✓	-	-	-	-	✓	✓	-	-	-	-	-	-	-	-	-	-	-	✓	✓
F003-18x14	18" x 14" 8 lbs.	✓	✓	✓	✓	-	-	-	-	✓	✓	-	-	-	-	-	-	-	-	-	-	-	✓	✓
F003-18x16	18" x 16" 9 lbs.	✓	✓	✓	✓	-	-	-	-	✓	✓	-	-	-	-	-	-	-	-	-	-	-	✓	✓
F003-18x18	18" x 18" 10 lbs.	✓	✓	✓	✓	-	-	-	-	✓	✓	-	-	-	-	-	-	-	-	-	-	-	✓	✓
F003-18x20	18" x 20" 11 lbs.	✓	✓	✓	✓	-	-	-	-	✓	✓	-	-	-	-	-	-	-	-	-	-	-	✓	✓

Fōmcore
SERVE. CREATE. INSPIRE.

1770 E. Keating Ave - Muskegon, MI 49442 • Tel: 231.366.4791 • www.fomcore.com

ADDITIONAL
RESOURCES



[CLICK TO VIEW »](#)